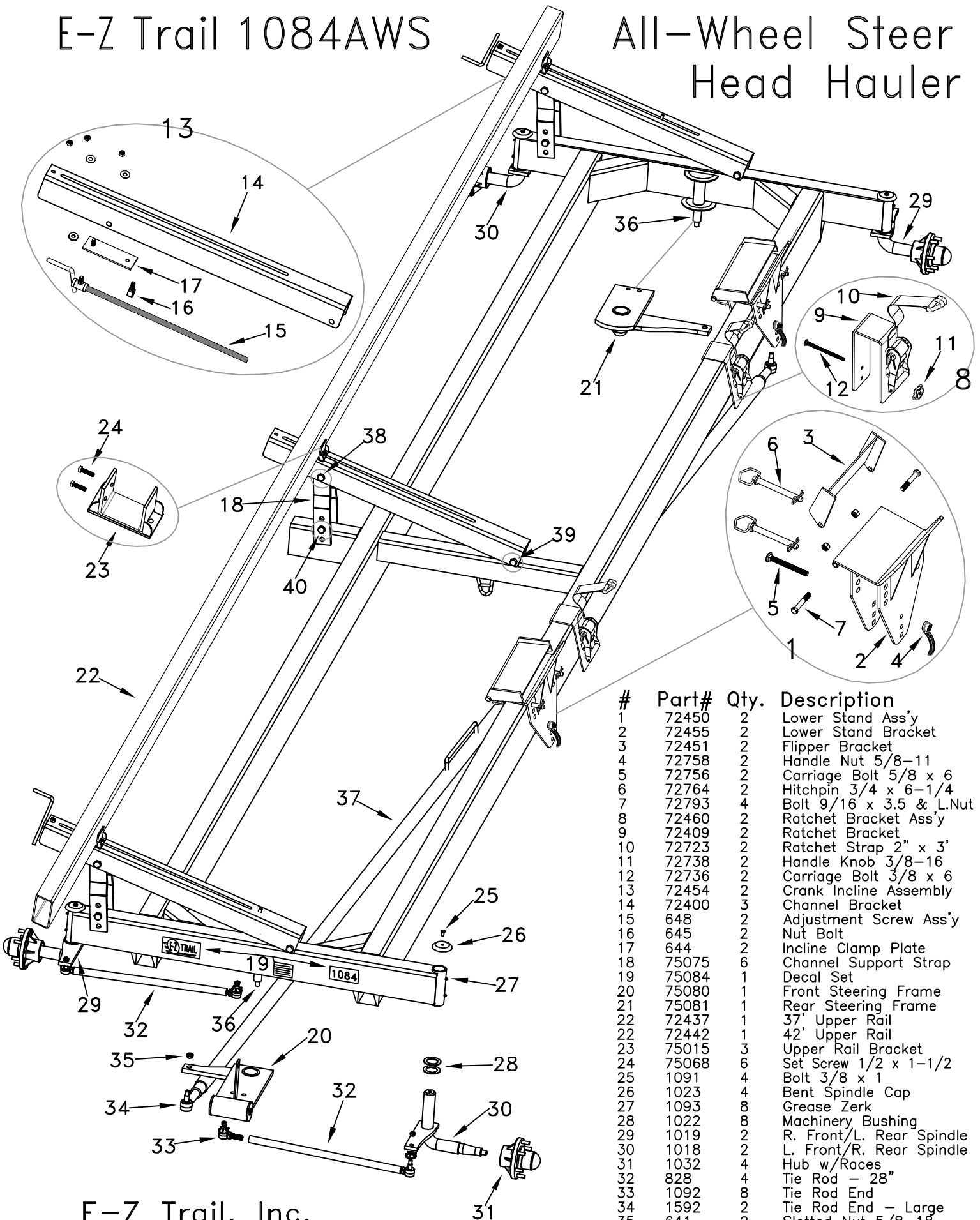


E-Z Trail 1084AWS

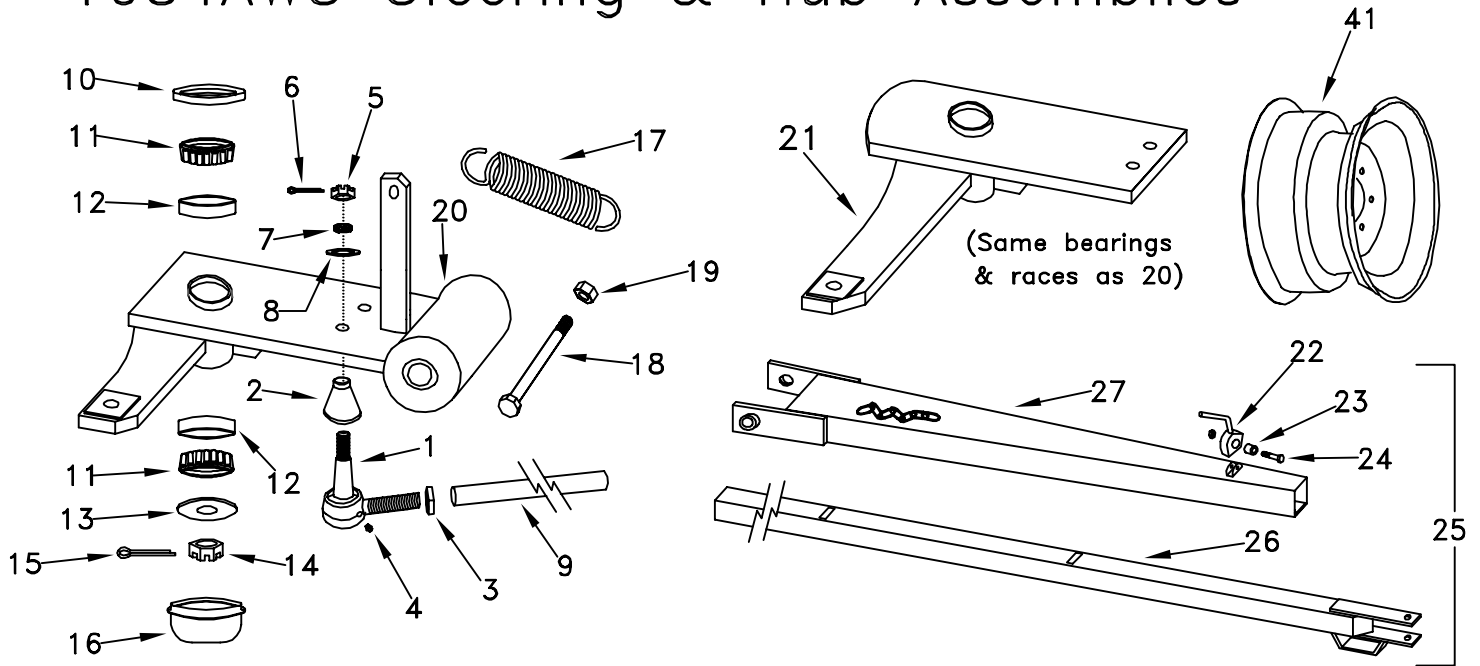
All-Wheel Steer Head Hauler



#	Part#	Qty.	Description
1	72450	2	Lower Stand Ass'y
2	72455	2	Lower Stand Bracket
3	72451	2	Flipper Bracket
4	72758	2	Handle Nut 5/8-11
5	72756	2	Carriage Bolt 5/8 x 6
6	72764	2	Hitchpin 3/4 x 6-1/4
7	72793	4	Bolt 9/16 x 3.5 & L.Nut
8	72460	2	Ratchet Bracket Ass'y
9	72409	2	Ratchet Bracket
10	72723	2	Ratchet Strap 2" x 3'
11	72738	2	Handle Knob 3/8-16
12	72736	2	Carriage Bolt 3/8 x 6
13	72454	2	Crank Incline Assembly
14	72400	3	Channel Bracket
15	648	2	Adjustment Screw Ass'y
16	645	2	Nut Bolt
17	644	2	Incline Clamp Plate
18	75075	6	Channel Support Strap
19	75084	1	Decal Set
20	75080	1	Front Steering Frame
21	75081	1	Rear Steering Frame
22	72437	1	37' Upper Rail
22	72442	1	42' Upper Rail
23	75015	3	Upper Rail Bracket
24	75068	6	Set Screw 1/2 x 1-1/2
25	1091	4	Bolt 3/8 x 1
26	1023	4	Bent Spindle Cap
27	1093	8	Grease Zerk
28	1022	8	Machinery Bushing
29	1019	2	R. Front/L. Rear Spindle
30	1018	2	L. Front/R. Rear Spindle
31	1032	4	Hub w/Races
32	828	4	Tie Rod - 28"
33	1092	8	Tie Rod End
34	1592	2	Tie Rod End - Large
35	641	2	Slotted Nut 5/8-18
36	1079	2	Steering Spindle Ass'y
37	75045	1	Steering Linkage Rod
38	841	6	Bolt 3/4 x 1.5 & Locknut
39	845	3	Bolt 3/4 x 5.5 & Locknut
40	75036	3	Bolt 3/4 x 6 & Locknut

E-Z Trail, Inc.
 Arthur, IL 217-543-3471
 www.e-ztrail.com

1084AWS Steering & Hub Assemblies



#	Part#	Qty.	Description
1	1092	8	Tie Rod End (Inc'd 2-6)
2	1043	8	Rubber Cover
3	1088	8	3/4-16 Jam Nut
4	1093	12	Grease Zerk
5	1042	8	9/16-18 Slotted Nut
6	1046	8	Cotter Pin
7	1048	8	5/8" Lock Washer
8	640	8	5/8" Flat Washer
9	828	4	Tie Rod
10	1081	2	Seal
11	1082	4	Steering Frame Bearing
12	1083	4	Steering Frame Race
13	1089	2	Washer
14	1087	2	3/4-16 Slotted Nut
15	1045	4	Cotter Pin
16	1098	2	Steering Frame Cap
17	1013	1	Spring
18	1014	1	Tongue Bolt
19	1020	1	7/8-9 Lock Nut
20	75080	1	Front Steering Frame
21	75081	1	Rear Steering Frame
22	609	1	Cam Latch
23	607	1	Cam Latch Bushing
24	606	1	7/16 x 2 Bolt & Locknut
25	612	1	12' Long Tongue Ass'y, 37'
25	694	1	14' Long Tongue Ass'y, 42'
26	613	1	12' Long Tongue Inner, 37'
26	695	1	14' Long Tongue Inner, 42'
27	611	1	12' & 14' Long Tng. Outer
28	1034	4	Hub Assembly
29	1044	4	Hub Cap
30	1087	4	3/4-16 Slotted Nut
31	1045	4	Cotter Pin
32	1086	4	Spindle Washer
33	1085	4	Outer Bearing
34	1084	4	Outer Race
35	1064	24	Wheel Stud
36	1065	24	Wheel Nut
37	1032	4	Hub w/ Races
38	1031	4	Inner Race
39	1030	4	Inner Bearing
40	1029	4	Grease Seal
41	8912	4	Wheel 12 x 10.5
	8926	4	Tire 26 x 12.00
	1096	4	Wheel 15 x 10
	12.5T	4	Tire 12.5L-15

SET-UP & OPERATING INSTRUCTIONS

1. Bolt wheels in place & torque to approx. 150 ft. lbs.
2. Attach tongue with 7/8 x 9-1/2 bolt and lock nut. Raise end of tongue & hook lift assist spring to chain on tongue.
3. Mount the lower stand assemblies & ratchet tie down assemblies to the left side frame rail.
4. Attach the crank incline assembly to right side of the front & rear axles. First fasten the support straps inside the channel bracket with 3/4 x 1-1/2 bolts & locknuts, then fasten the support straps to the axle (usually using the middle holes) with a 3/4 x 6 bolt & locknut. Fasten the bottom end to the axle using a 3/4 x 5-1/2 bolt & locknut. Lastly, install the channel bracket w/o crank to the center of the frame.
5. Attach the 3 upper rail brackets to the channel brackets, leaving the 1/2" locknuts loose enough for the rail to slide. Drop the upper rail into these brackets and tighten the set screws. (suggested position of the upper rail is 4' in front of front axle for 37' rail, or 7' for 42' rail) Observe the degree of slope: it must be steep enough so the lower feeder house will break away without striking the lower rail. If necessary, adjust rail height by using a different hole in the support straps.
6. Lubricate all grease points. Inflate tires to 45 PSI normal pressure; 12 row heads may require up to 60 PSI. Securely tie down the head being transported using tie-down straps. Always exercise safety first! Proper lighting is required when using on public highways.