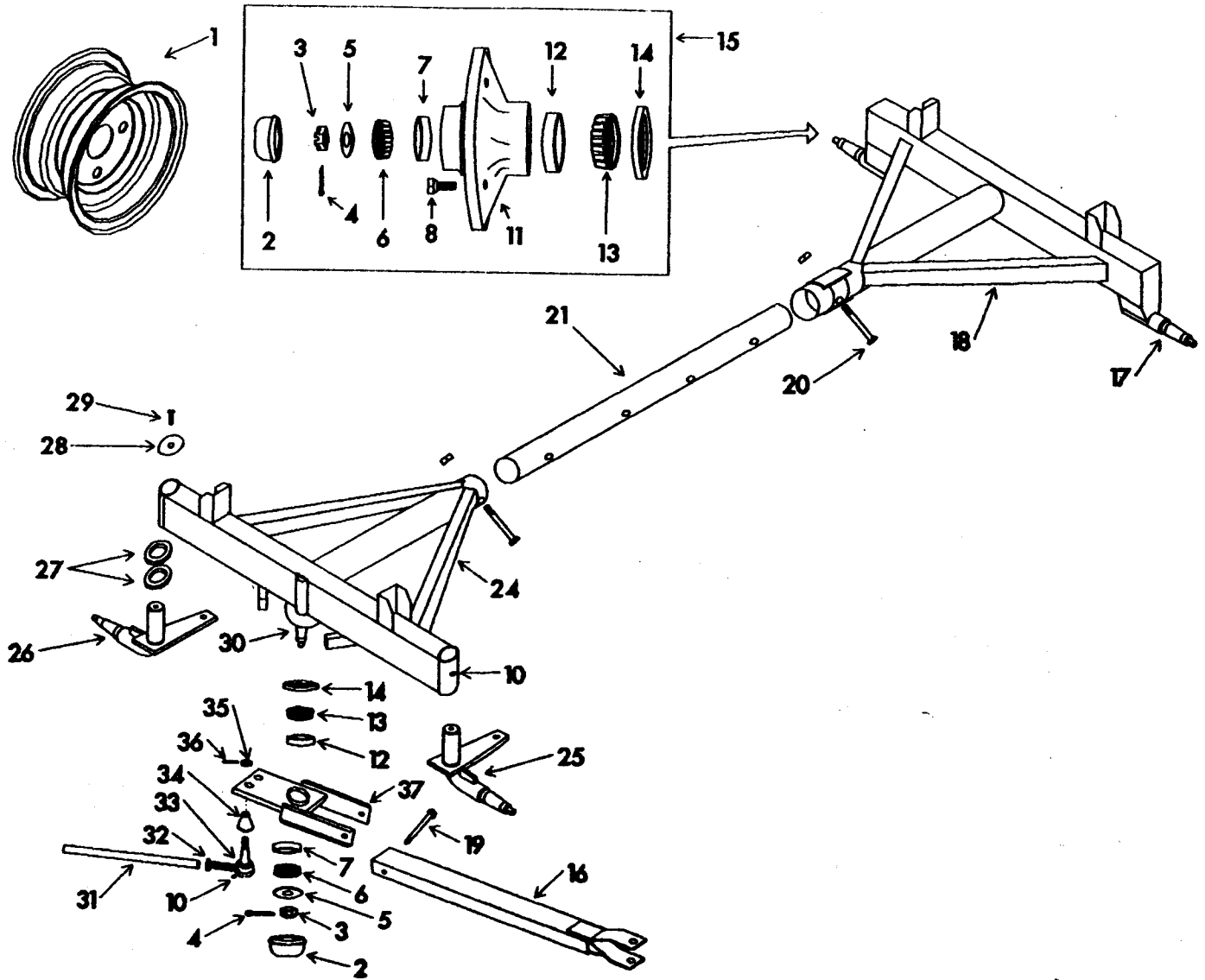
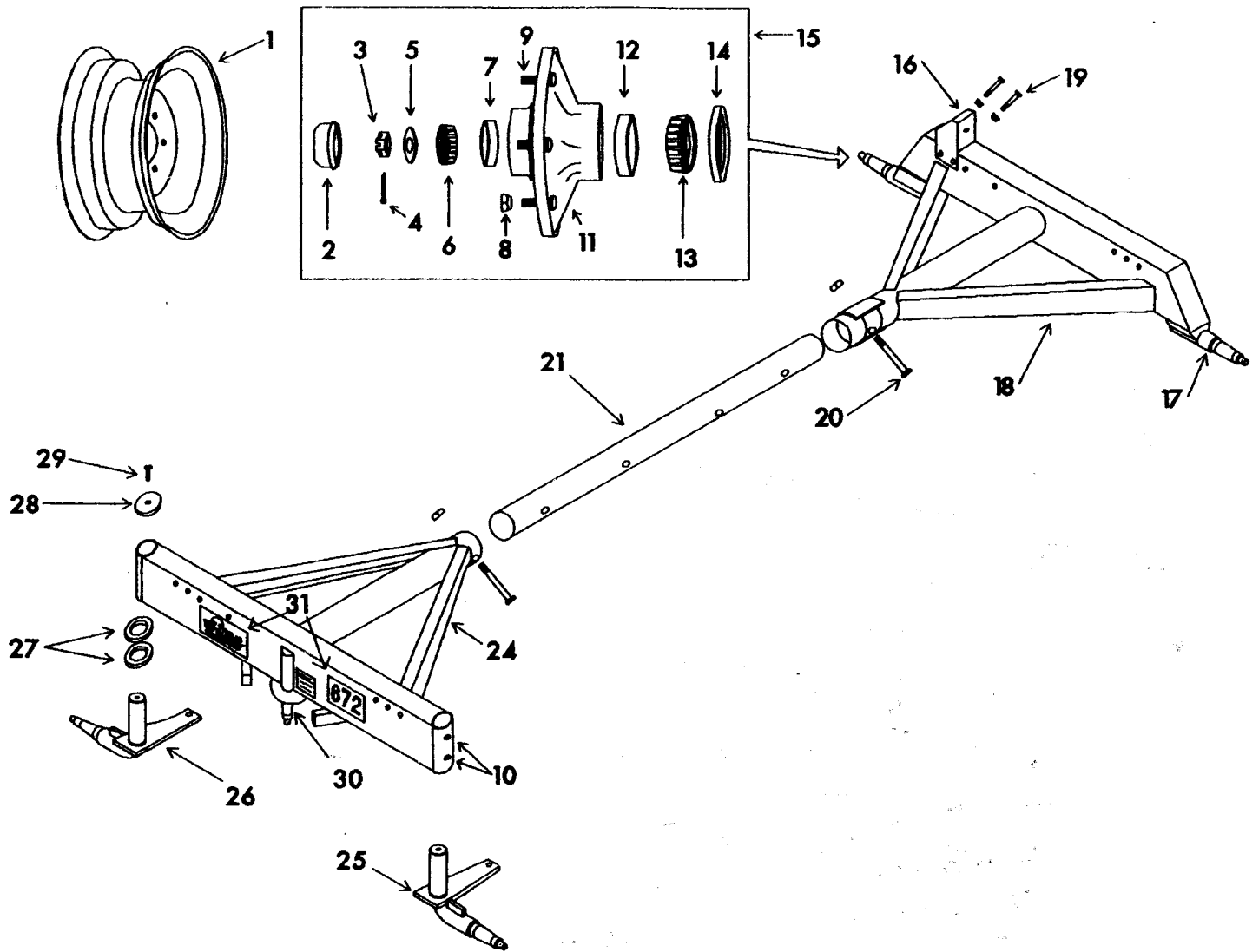


E-Z Trail 246 & 260 Gears



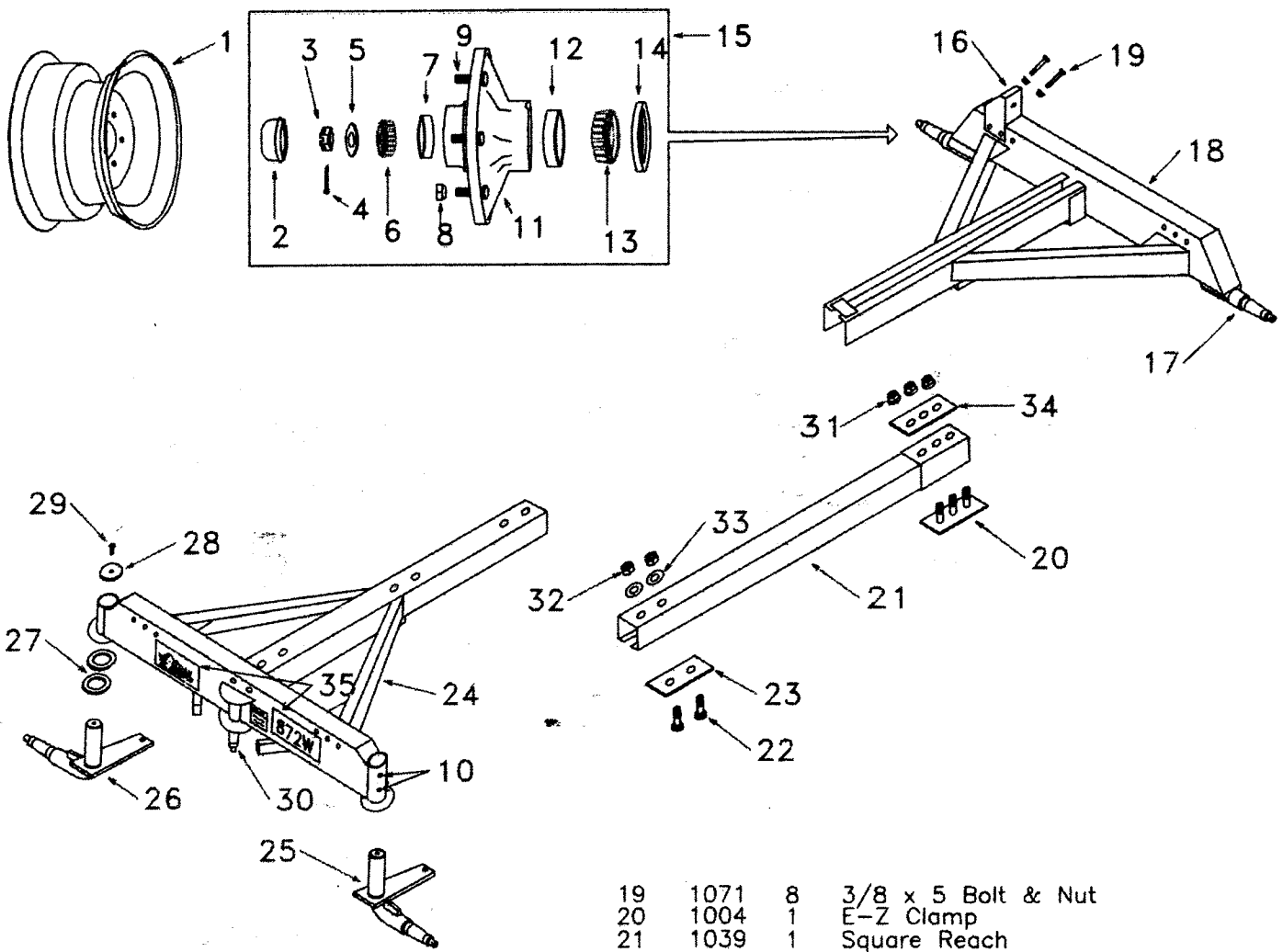
#	Part#	Qty.	Description	#	Part#	Qty.	Description
1	251	4	Wheel, 8 x 3-3/4	19	214	1	1/2 x 4 Bolt w/Lock Nut
1	252	4	Wheel, 12 x 3 opt.	20	210	2	3/8 x 3 Bolt w/Lock Nut
2	226	5	Hub Cap	21	203	1	Standard Reach
3	641	5	3/4-16 Slotted Nut	24	201	1	Front Axle-246
4	1045	5	Cotter Pin	24	205	1	Front Axle-260
5	640	5	Spindle Washer	25	228	1	Left Front Spindle
6	244	5	Outer Bearing	26	227	1	Right Front Spindle
7	245	5	Outer Race	27	229	4	Machinery Bushing
8	243	16	Hub Bolt	28	230	2	Spindle Cap
10	1093	10	Grease Zerk	29	1091	2	3/8 x 1 Bolt
11	242	4	Hub w/Races	30	279	1	Steering Spindle Ass'y
12	218	5	Inner Race	31	240	2	Tie Rod-246
13	217	5	Inner Bearing	31	239	2	Tie Rod-260
14	216	5	Grease Seal	32	234	4	Jam Nut
15	249	4	Hub Ass'y	33	238	4	Tie Rod End Ass'y
16	212	1	Tongue	34	236	4	Rubber Cover
17	241	2	Rear Spindle	35	233	4	1/2-20 Slotted Nut
18	202	1	Rear Axle-246	36	1046	4	Cotter Pin
18	204	1	Rear Axle-260	37	215	1	Steering Frame w/Races

E-Z Trail 666, & 672 Gears



#	Part#	Qty.	Description	#	Part#	Qty.	Description
1	868	4	Wheel, 15 x 6	16	615	4	Stake Pocket
1	650	4	Wheel, 15 x 5, opt.	17	628	2	Rear Spindle
2	642	4	Hub Cap	18	602	1	Rear Axle-666
3	641	4	3/4-16 Slotted Nut	18	604	1	Rear Axle-672
4	1045	4	Cotter Pin	19	616	8	3/8 x 4 Bolt & Nut
5	640	4	Spindle Washer	20	610	2	1/2 x 3-1/2 Bolt & Lock Nut
6	639	4	Outer Bearing	21	608	1	80" Standard Reach
7	638	4	Outer Race	24	601	1	Front Axle-666
8	865	24	Wheel Nut	24	603	1	Front Axle-672
9	864	24	Wheel Stud	25	621	1	Left Front Spindle
10	1093	8	Grease Zerk	26	620	1	Right Front Spindle
11	635	4	Hub w/Races	27	622	4	Machinery Bushing
12	1084	4	Inner Race	28	623	2	Bent Spindle Cap
13	1085	4	Inner Bearing	29	1091	2	3/8 x 1 Bolt
14	632	4	Grease Seal	30	679	1	Steering Spindle Ass'y
15	643	4	Hub Ass'y	31	678	1	Decal Set

E-Z Trail 860W, 872W, & 890W Gears

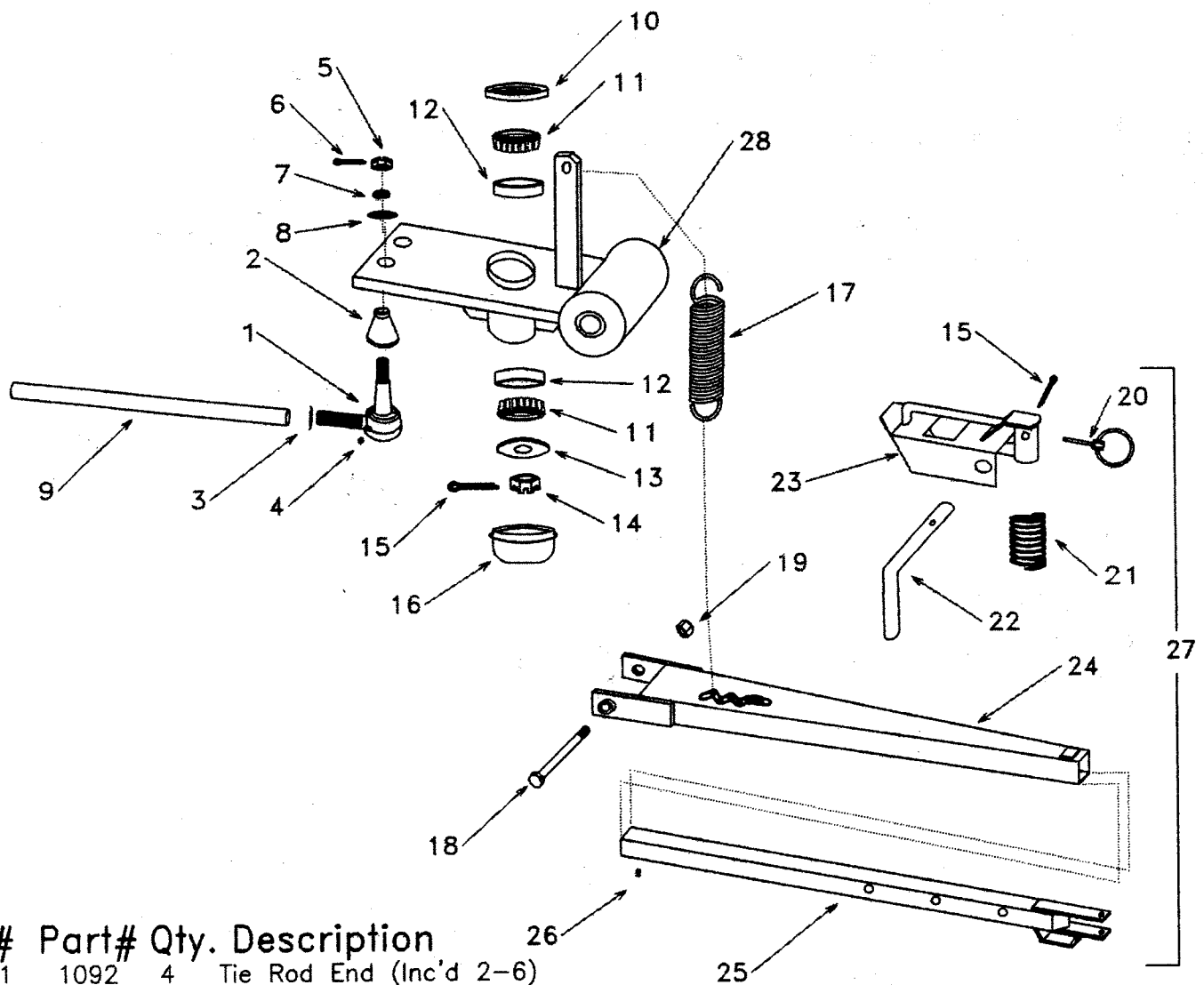


#	Part#	Qty.	Description
1	1095	4	Wheel, 15 x 8
2	1044	4	Hub Cap
3	1087	4	3/4-16 Slotted Nut
4	1045	4	Cotter Pin
5	1086	4	Spindle Washer
6	1085	4	Outer Bearing
7	1084	4	Outer Race
8	865	24	Wheel Nut
9	864	24	Wheel Stud
10	1093	8	Grease Zerk
11	835	4	Hub w/Races
12	834	4	Inner Race
13	833	4	Inner Bearing
14	1081	4	Grease Seal
15	874	4	Hub Ass'y
16	1070	4	Stake Pocket
17	823	2	Rear Spindle
18	802	1	Rear Axle-860W
18	821	1	Rear Axle-872W
18	804	1	Rear Axle-890W

(Specify Round or Square Reach)

19	1071	8	3/8 x 5 Bolt & Nut
20	1004	1	E-Z Clamp
21	1039	1	Square Reach
	1003	1	Old Style Round Reach
22	1006	2	3/4 x 1-3/4 Bolt
23	1005	1	Spacer Plate
24	801	1	Front Axle-860W
24	820	1	Front Axle-872W
24	803	1	Front Axle-890W
			(Specify Round or Square Reach)
			New #1080 required if repalcing axle w/old style steering spindle.
25	811	1	Left Front Spindle
26	810	1	Right Front Spindle
27	815	4	Machinery Bushing
28	816	2	Bent Spindle Cap
29	1091	2	3/8 x 1 Bolt
30	1079	1	Steering Spindle Ass'y, New Style
	1080K	1	Steering Update Kit: Steering Frame, Spindle, Stops, Bearings, Cap & Seal to convert old style gear to new steering.
31	1007	3	3/4-16 Flange Nut
32	1012	2	3/4-10 Lock Nut
33	1015	2	3/4 Flat Washer
34	1024	1	Upper Clamp Plate
35	878	1	Decal Set

Steering Ass'y for 6, 8, 10, & 12 Ton Gears

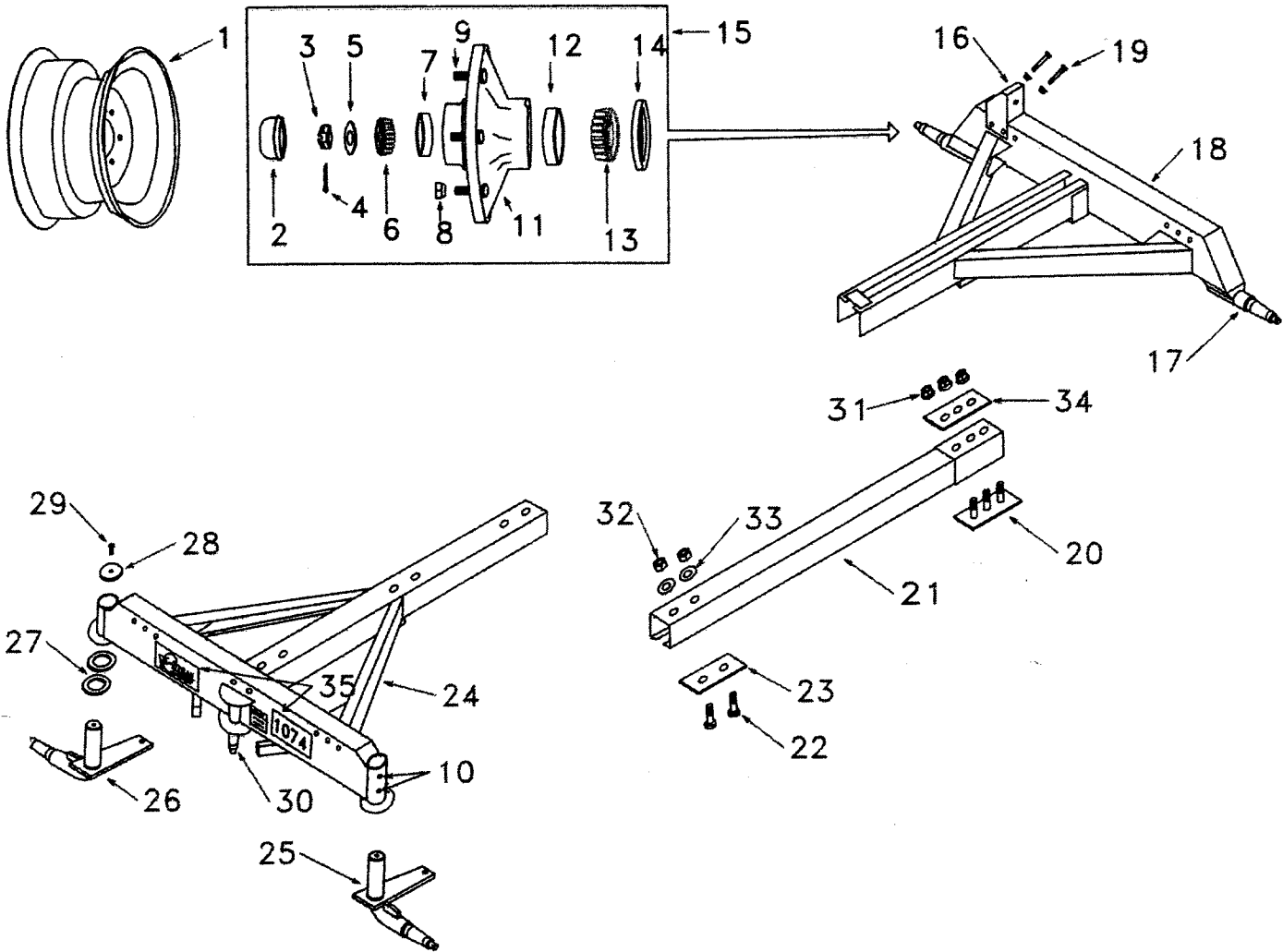


#	Part#	Qty.	Description
1	1092	4	Tie Rod End (Inc'd 2-6)
2	1043	4	Rubber Cover
3	1088	4	3/4-16 Jam Nut
4	1093	6	Grease Zerk
5	1042	4	9/16-18 Slotted Nut
6	1046	4	Cotter Pin
7	1048	4	5/8" Lock Washer
8	640	4	5/8" Flat Washer
9	1027	2	Tie Rod 672,872W,1074,1274
9	826	2	Tie Rod, Model 860W
9	827	2	Tie Rod, Model 890W
9	629	2	Tie Rod, Model 666
10	1081	1	Seal
11	1082	2	Steering Frame Bearing
12	1083	2	Steering Frame Race
13	1089	1	Washer
14	1087	1	3/4-16 Slotted Nut
15	1045	2	Cotter Pin
16	1098	1	Steering Frame Cap
17	1013	1	Spring

#	Part#	Qty.	Description
18	1014	1	Tongue Bolt
19	1020	1	7/8-9 Lock Nut
20	1017	1	Lock Pin
21	1010	1	Spring
22	1011	1	Latch Pin
23	1016	1	Latch
24	1061	1	Tongue Outer (Older styles not available)
25	1062	1	Tongue Inner (Older styles not available)
26	1562	1	3/4-10 x 1 Bolt
27	1063	1	E-Z Hitch Ass'y
28	1080	1	Steering Frame w/Races

There are 2 old style steering frames:
tapered sides with same size bearings,
& tapered sides with small lower bearing

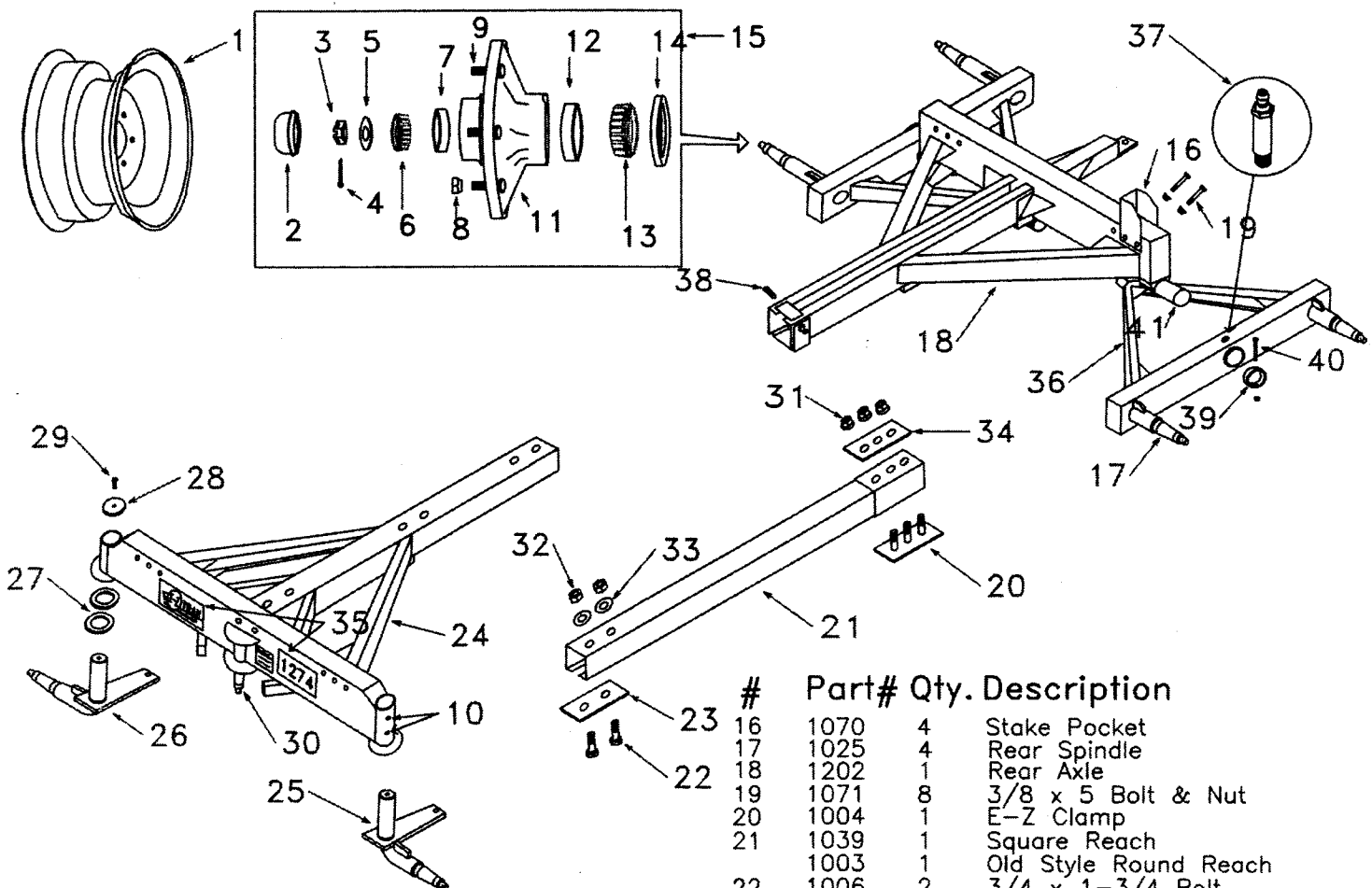
E-Z Trail 1074 Gear



#	Part#	Qty.	Description
1	1096	4	Wheel, 15 x 10
1	1099	4	Wheel, 16 x 10, opt.
2	1044	4	Hub Cap
3	1087	4	3/4-16 Slotted Nut
4	1045	4	Cotter Pin
5	1086	4	Spindle Washer
6	1085	4	Outer Bearing
7	1084	4	Outer Race
8	1065	24	Wheel Nut
9	1064	24	Wheel Stud
10	1093	8	Grease Zerk
11	1032	4	Hub w/Races
11	1036	2	Brake Hub w/Races
12	1031	4	Inner Race
13	1030	4	Inner Bearing
14	1029	4	Grease Seal
15	1034	4	Hub Ass'y
15	1035	2	Brake Hub Ass'y
16	1070	4	Stake Pocket
17	1025	2	Rear Spindle
18	1002	1	Rear Axle
(Specify round or square reach)			

#	Part#	Qty.	Description
19	1071	8	3/8 x 5 Bolt & Nut
20	1004	1	E-Z Clamp
21	1039	1	Square Reach
	1003	1	Old Style Round Reach
22	1006	2	3/4 x 1-3/4 Bolt
23	1005	1	Spacer Plate
24	1001	1	Front Axle
(Specify round or square reach)			
New #1080 required if replacing axle w/ old style steering spindle			
25	1019	1	Left Front Spindle
26	1018	1	Right Front Spindle
27	1022	4	Machinery Bushing
28	1023	2	Bent Spindle Cap
29	1091	2	3/8 x 1 Bolt
30	1079	1	Steering Spindle Ass'y, New Style
31	1007	3	3/4-16 Flange Nut
32	1012	2	3/4-10 Lock Nut
33	1015	2	3/4 Flat Washer
34	1024	1	Upper Clamp Plate
35	1078	1	Decal Set

E-Z Trail 1274 Gear

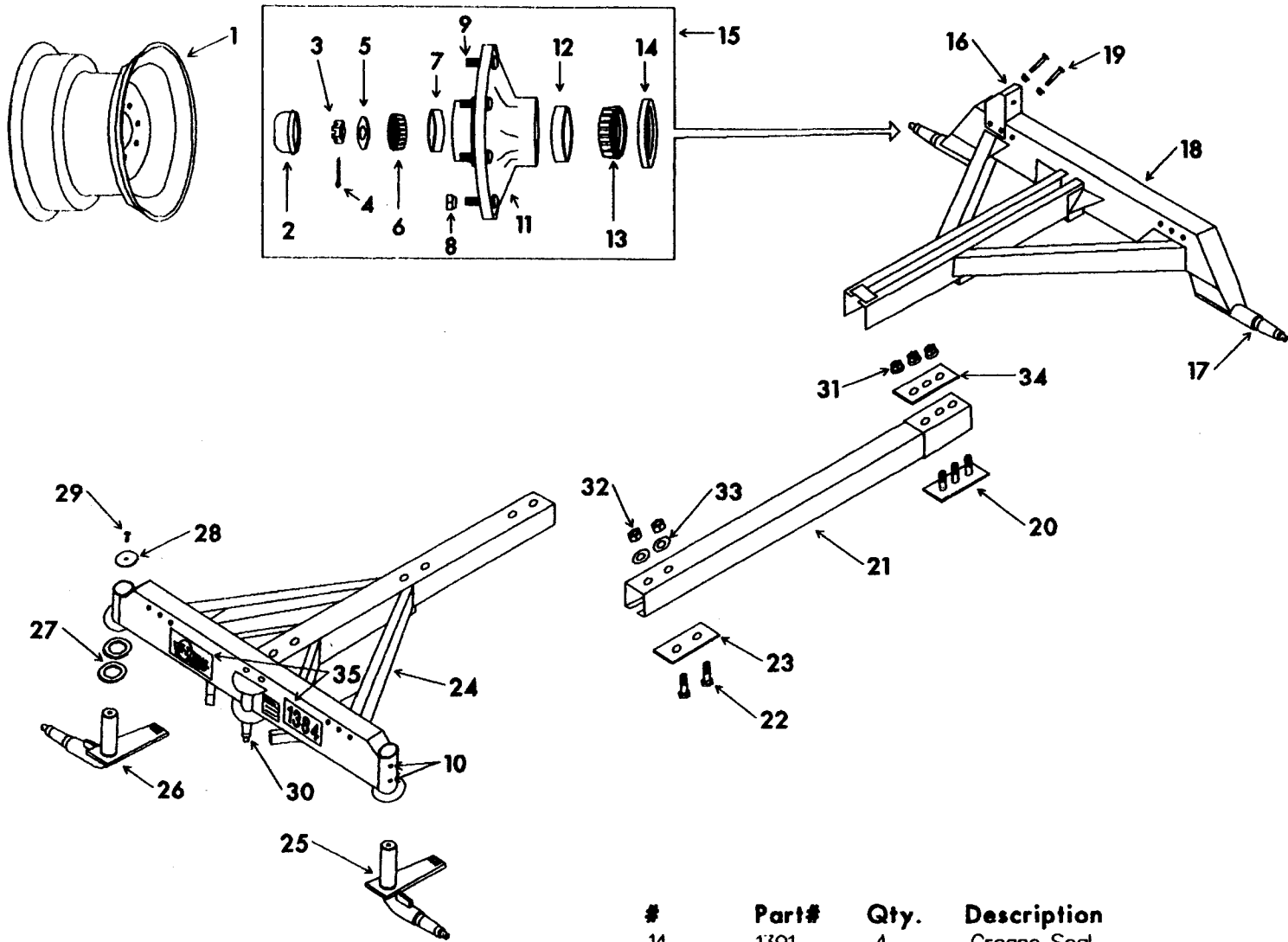


#	Part#	Qty.	Description
1	1096	6	Wheel, 15 x 10
2	1044	6	Hub Cap
3	1087	6	3/4-16 Slotted Nut
4	1045	6	Cotter Pin
5	1086	6	Spindle Washer
6	1085	6	Outer Bearing
7	1084	6	Outer Race
8	1065	36	Wheel Nut
9	1064	36	Wheel Stud
10	1093	12	Grease Zerk
11	1032	6	Hub w/Races
11	1036	2	Brake Hub w/Races
12	1031	6	Inner Race
13	1030	6	Inner Bearing
14	1029	6	Grease Seal
15	1034	6	Hub Ass'y
15	1035	2	Brake Hub Ass'y

#	Part#	Qty.	Description
16	1070	4	Stake Pocket
17	1025	4	Rear Spindle
18	1202	1	Rear Axle
19	1071	8	3/8 x 5 Bolt & Nut
20	1004	1	E-Z Clamp
21	1039	1	Square Reach
	1003	1	Old Style Round Reach
22	1006	2	3/4 x 1-3/4 Bolt
23	1005	1	Spacer Plate
24	1201	1	Front Axle
25	1019	1	Left Front Spindle
26	1018	1	Right Front Spindle
27	1022	4	Machinery Bushing
28	1023	2	Bent Spindle Cap
29	1091	2	3/8 x 1 Bolt
30	1079	1	Steering Spindle Ass'y
31	1007	3	3/4-16 Flange Nut
32	1012	2	3/4-10 Lock Nut
33	1015	2	3/4 Flat Washer
34	1024	1	Upper Clamp Plate
35	1278	1	Decal Set
36	1204	2	Tandem Wing w/Spindles
37	1209	2	Long Grease Zerk
38	1210	2	1/2 x 1-3/4 Set Screw
39	1205	2	Retainer Collar
40	616	2	3/8 x 4 Bolt & Lock Nut
41	1208	2	Pivot Shaft

(Specify round or square reach)
 New #1080 required if replacing
 an axle w/old style steering spindle

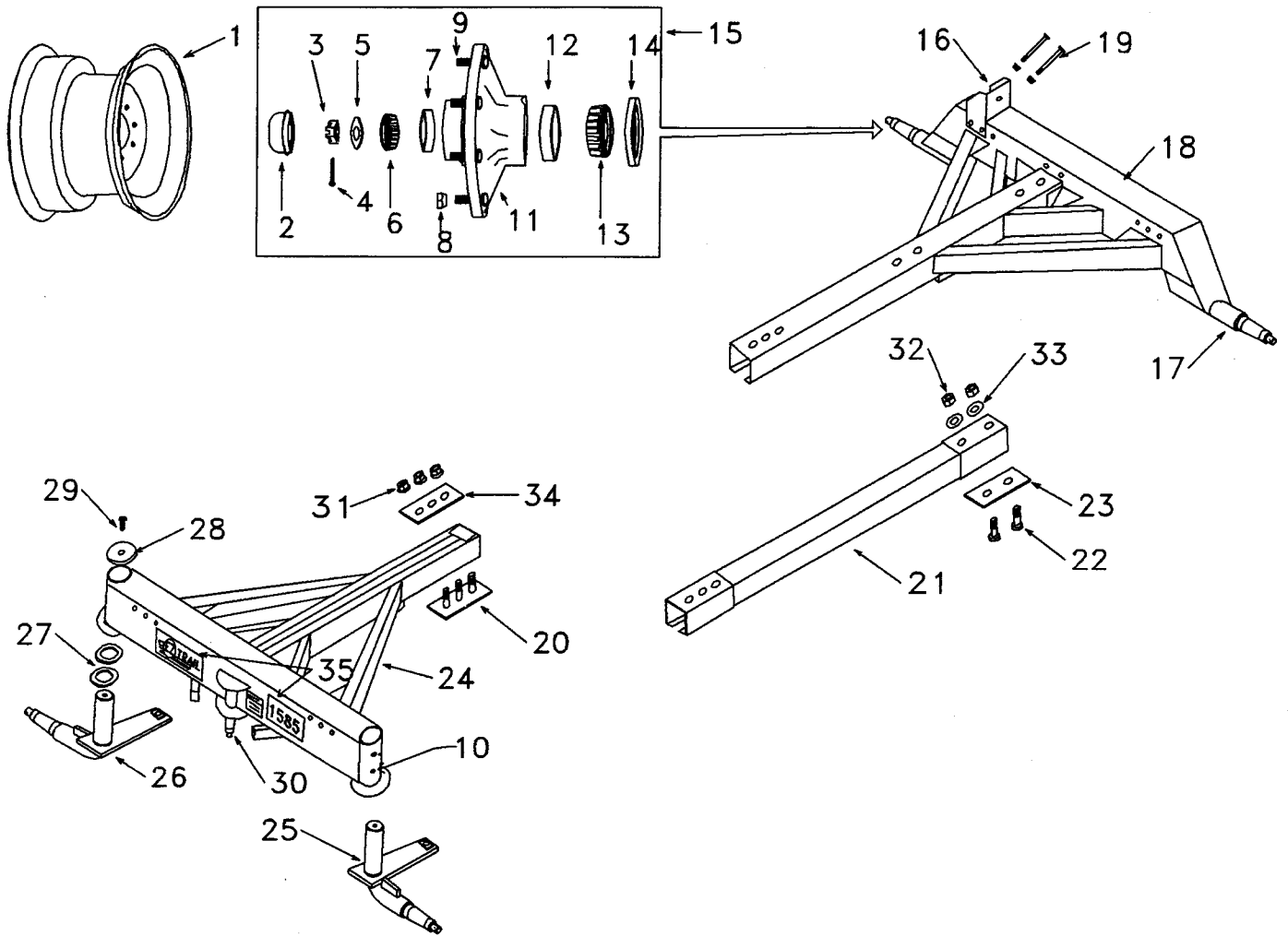
E-Z Trail 1384 & 1384B Gears



#	Part#	Qty.	Description
1	1353	4	Wheel, W11C x 16.1
1	1354	4	Wheel, 22.5 x 13.5, opt.
1	1355	4	Wheel, 22.5 x 8.25, opt.
2	1044	4	Hub Cap, 1384
2	1098	4	Hub Cap, 1384B
3	1087	4	3/4-16 Slotted Nut, 1384
3	1551	4	1-14 Slotted Nut, 1384B
4	1045	4	Cotter Pin, 1384
4	1545	4	Cotter Pin, 1384B
5	1086	4	Spindle Washer, 1384
5	1550	4	Spindle Washer, 1384B
6	1085	4	Outer Bearing, 1384
6	1082	4	Outer Bearing, 1384B
7	1084	4	Outer Race, 1384
7	1083	4	Outer Race, 1384B
8	1065	32	Wheel Nut
9	1064	32	Wheel Stud
10	1093	8	Grease Zerk
11	1332	4	Hub w/Races, 1384
11	1336	2	Brake Hub w/Races, 1384
11	1342	4	Hub w/Races, 1384B
11	1346	2	Brake Hub w/Races, 1384B
12	1384	4	Inner Race
13	1385	4	Inner Bearing

#	Part#	Qty.	Description
14	1391	4	Grease Seal
15	1334	4	Hub Ass'y 1384
15	1335	2	Brake Hub Ass'y, 1384
15	1344	4	Hub Ass'y 1384B
15	1345	2	Brake Hub Ass'y, 1384B
16	1070	4	Stake Pocket
17	1325	2	Rear Spindle, 1384
17	1328	2	Rear Spindle, 1384B
18	1302	1	Rear Axle w/Spindles, 1384
18	1304	1	Rear Axle w/Spindles, 1384B
19	1071	4	3/8 x 5 Bolt & Nut
20	1004	1	E-Z Clamp Ass'y
21	1003Sq	1	Square Reach
22	1006	2	3/4 x 1-3/4 Bolt
23	1005	1	Spacer Plate
24	1301	1	Front Axle
25	1319	1	Left Front Spindle, 1384
25	1311	1	Left Front Spindle, 1384B
26	1318	1	Right Front Spindle, 1384
26	1310	1	Right Front Spindle, 1384B
27	1322	4	Machinery Bushing
28	1323	2	Bent Spindle Cap
29	1091	2	3/8 x 1 Bolt
30	1079	1	Steering Spindle Ass'y
31	1007	3	3/4-16 Flange Nut
32	1012	2	3/4-10 Lock Nut
33	1015	2	3/4 Flat Washer
34	1024	1	Upper Clamp Plate
35	1378	1	Decal Set

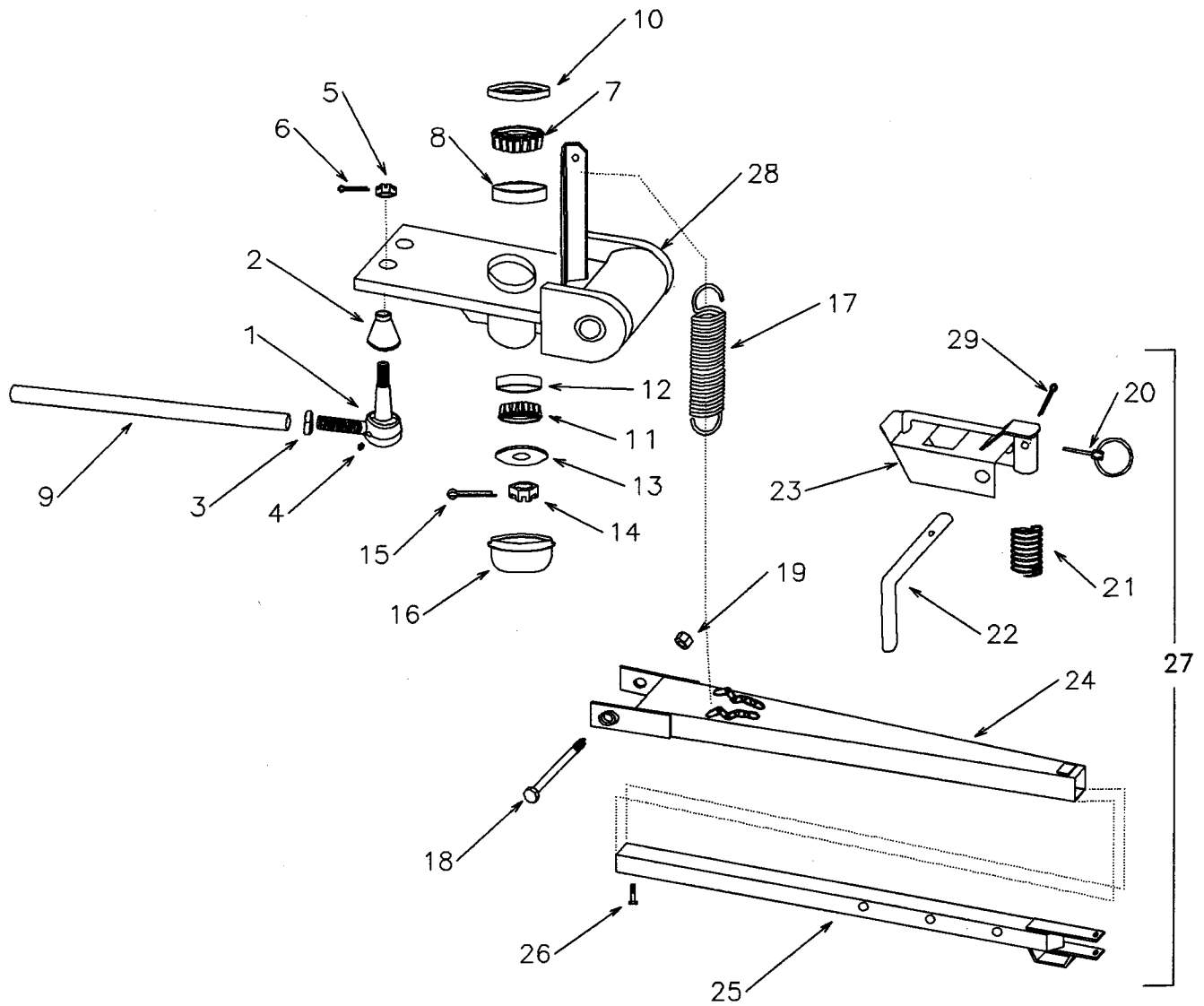
E-Z Trail 1585 Gear



#	Part#	Qty.	Description
1	1595	4	16.1x14-8 Wheel
1	1354	4	Opt. 22.5x13.5-8 Wheel
2	1552	4	Hub Cap
3	1551	4	1-14 Slotted Nut
4	1545	4	Cotter Pin
5	1550	4	Spindle Washer
6	1030	4	Outer Bearing
7	1031	4	Outer Race
8	1565	32	Wheel Nut
9	1564	32	Wheel Stud
10	1093	8	Grease Zerk
11	1532	4	Hub w/Races
11	1533	2	Brake Hub w/Races
12	1585	4	Inner Race
13	1584	4	Inner Bearing
14	1529	4	Grease Seal
15	1534	4	Hub Ass'y
15	1535	2	Brake Hub Ass'y
16	1569	4	Stake Pocket
17	1525	2	Rear Spindle
18	1506	1	Rear Axle w/Spindles
19	1572	8	3/8 x 7 Stake Bolt & Nut

#	Part#	Qty.	Description
20	1504	1	Reach Clamp
21	1539	1	Opt: Square Center Reach
22	1006	2	3/4 x 1-3/4 Bolt
23	1005	1	Spacer Plate
24	1505	1	Front Axle
25	1531	1	Left Front Spindle
26	1530	1	Right Front Spindle
27	1522	4	Machinery Bushing
28	1523	2	Bent Spindle Cap
29	1520	2	Spindle Cap Screw
30	1579	1	Steering Spindle Ass'y
31	1007	3	3/4-16 Flange Nut
32	1012	2	3/4-10 Lock Nut
33	1015	2	3/4 Flat Washer
34	1524	1	Reach Clamp Plate
35	1577	1	Decal Set

E-Z TRAIL STEERING ASS'Y FOR MODEL 1585



#	Part#	Qty.	Description
1	1592	4	Tie Rod End Ass'y (Inc'd 2-6)
2	1543	4	Rubber Cover
3	1588	4	Jam Nut
4	1094	4	Grease Zerk
5	641	4	5/8-18 Slotted Nut
6	1046	4	Cotter Pin
7	1385	1	Top Steering Frame Bearing
8	1384	1	Top Steering Frame Race
9	1527	2	Tie Rod
10	1578	1	Steering Frame Seal
11	1030	1	Bottom Steering Frame Bearing
12	1031	1	Bottom Steering Frame Race
13	1550	1	Washer
14	1551	1	1-14 Slotted Nut
15	1545	1	Cotter Pin

#	Part#	Qty.	Description
16	1552	1	Cap
17	1013	2	Spring
18	1514	1	Tongue Bolt
19	1596	1	1-8 Lock Nut
20	1017	1	Lock Pin
21	1010	1	Spring
22	1511	1	Latch Pin
23	1516	1	Latch
24	1560	1	Tongue Outer
25	1561	1	Tongue Inner
26	1562	1	3/4-10 x 1 Bolt
27	1567	1	E-Z Hitch
28	1580	1	Steering Frame
29	1045	1	Cotter Pin