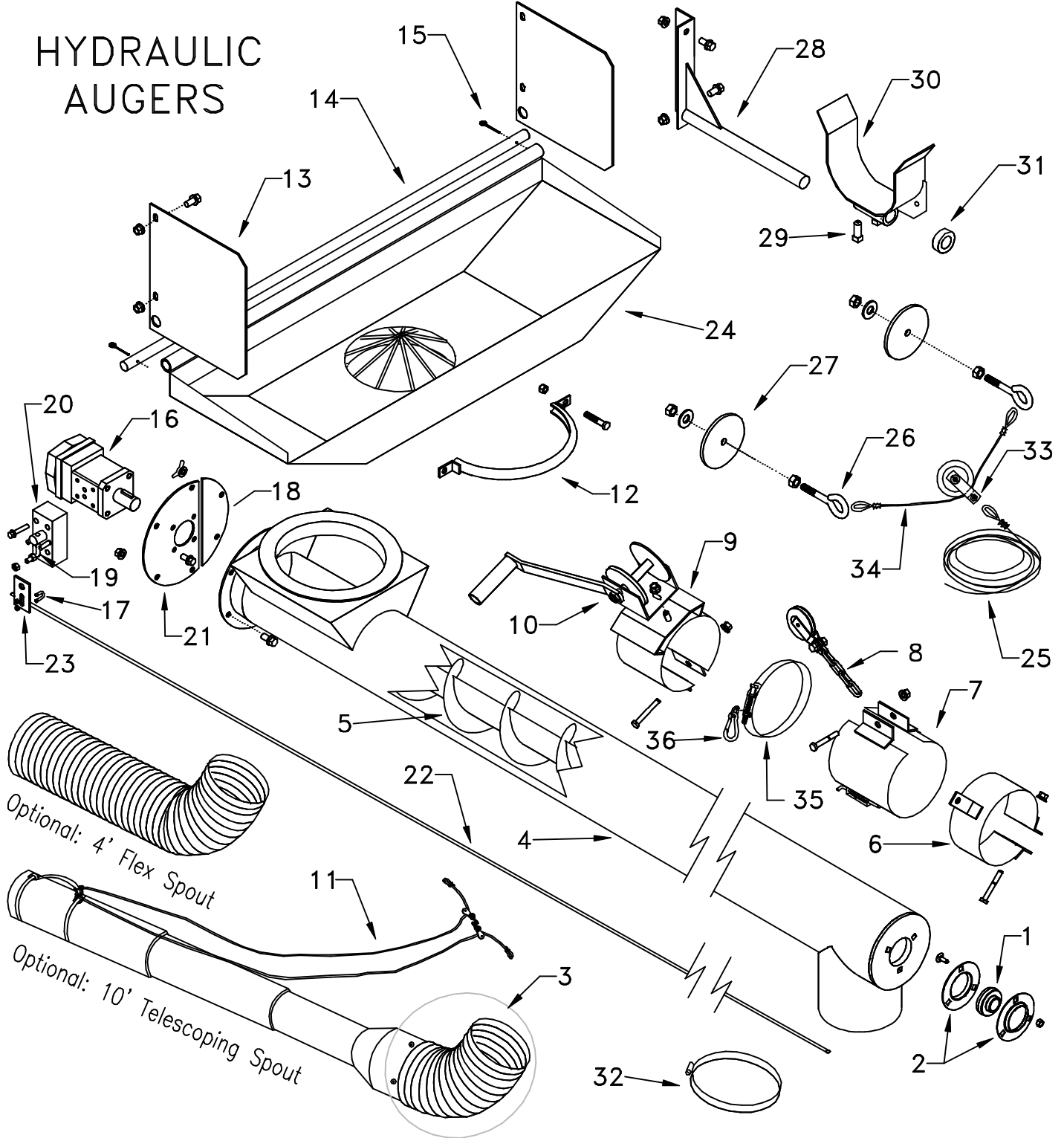


HYDRAULIC AUGERS

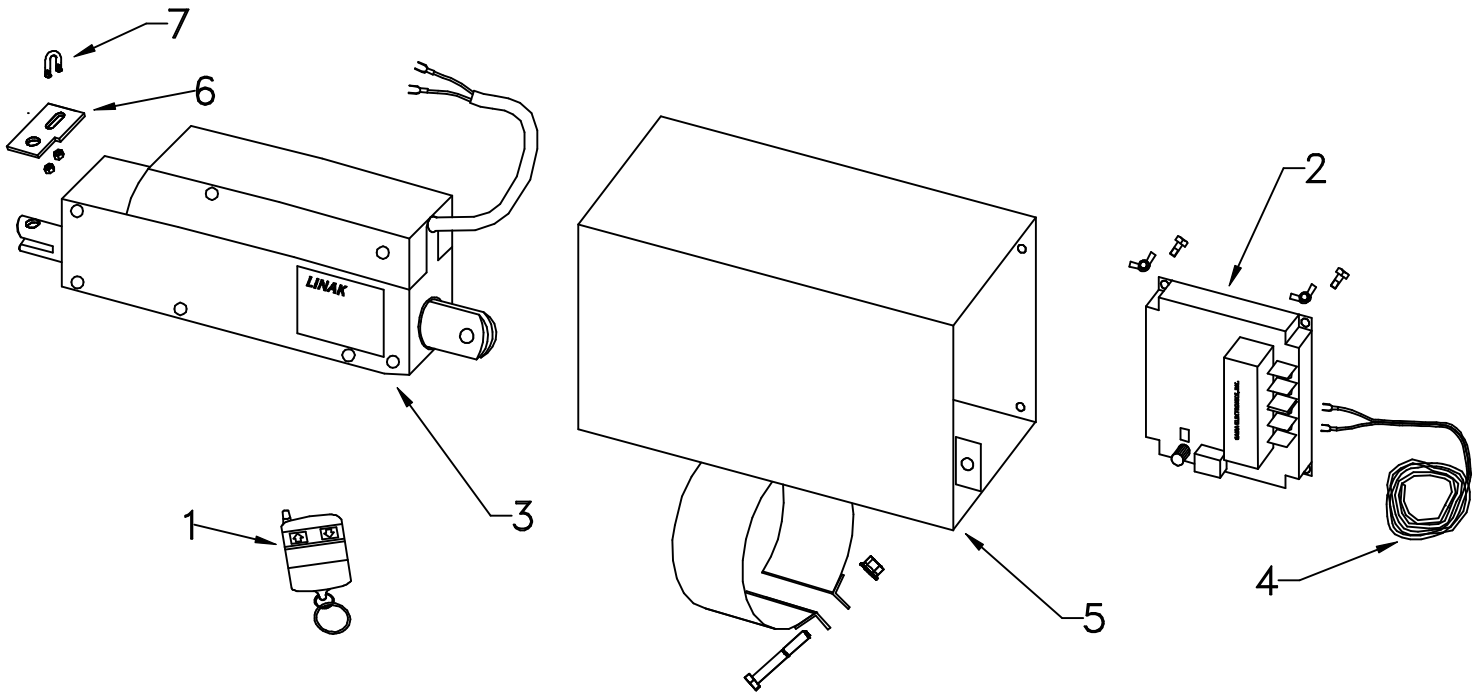


#	Description	Part #
1	1" Bearing	61001
2	Bearing Flange	61003
3	Replacement Flex w/ Rivets	61240
4	12' Auger Tube	61201
4	14' Auger Tube	61041
4	16' Auger Tube	61043
5	12' Auger Screw	61202
5	14' Auger Screw	61042
5	16' Auger Screw	61044
6	Control Rod Bracket	61212
7	Pulley Brckt. & Trnsprt. Latch	61032
8	2-1/2" Pulley & Chain	61220
9	Winch Bracket	61216
10	Brake Winch	61215
11	Rope & Pulley Kit	61242

#	Description	Part #
12	Flange Clamp	61205
13	Hopper Side Plate	61013
14	Hopper Rod	61014
15	Cotter Pin	1045
16	Hyd. Motor for Bolt-on Valve	61227
	Seal Kit for Sq. 4-bolt Motor	61225
	Seal Kit for Rd. 7-bolt Motor	61235
17	U-bolt	61024
18	Clean-out Door	61222
19	Valve Lever	61025
20	Control Valve, Direct Mount	61228
21	Motor Plate	61206
22	12' Fiberglass Control Rod	61211
22	14' Fiberglass Control Rod	61213
22	16' Fiberglass Control Rod	61214

#	Description	Part #
23	Control Rod Plate	61023
24	Hopper	61203
25	Winch Cable Assembly	61218
26	1/2" X 4" Eye Bolt	61026
27	Eye Bolt Support Washer	61027
28	Transport Bracket	61028
29	1/2" X 1" Set Screw	61029
30	Transport Cradle	61030
31	1" Lock Collar	61031
32	Spout Clamp	61047
33	3-1/2" Pulley	61251
34	Attachment Cable Assembly	61252
35	Holder Clamp	61048
36	Spring Snap Link	61049

WIRELESS REMOTE KIT



#	Description	Part #
1	Keyfob Remote Transmitter	62001
2	Remote Receiver	62003
3	Linear Actuator	62005
4	Power Cord	62007

#	Description	Part #
5	Wireless Remote Bracket	62008
6	Control Rod Plate	61023
7	U-Bolt	61024

Installation Instructions:

1. Mount unit to auger approximately 2' from bottom end.
2. Insert the auger control rod thru the square tube in the center of unit. Adjust the unit so it lines up straight with the control rod.
3. Adjust the arm on the control valve out so that it takes a 2-1/4" stroke to go from fully closed to fully open.
4. With the actuator retracted and the control rod pulled up, fasten the actuator rod to the control rod with the U-bolt.
5. Connect power cord to 12 volt DC power source. The smooth insulated wire is +, the ribbed wire is ground.
6. Press button on transmitter and hold until full stroke is completed.

Transmitter & receiver are programmed to work together. Should re-programming be needed, follow these instructions:

1. Verify that the DC input power is connected to the receiver.
2. Depress and hold the receiver's "LEARN" pushbutton switch. After the "LEARN" LED illuminates, release the switch.
3. Depress and hold any pushbutton on the remote. Verify that the "LEARN" LED flashes ON and OFF, and then stays ON. This verifies that the receiver has identified the remote being used.
4. After 5-seconds the "LEARN" LED will extinguish.
5. The system is ready for operation. Depress any switch on the remote to verify the operation.

Installation Instructions for E-Z Trail Hydraulic Augers

1. Drill 3/8" hole on each side of the gravity box opening using the hopper side plate as a template and the gravity box chute hole as the base hole on the side plate.

Note: On gravity boxes with openings narrower than auger, side plates are not required. Instead, drill a 13/16" hole on each side of the gravity box opening. Using a hacksaw, cut the pipe that the hopper rod goes through so that the hopper is centered within the opening. Run the hopper rod through the hopper; insert the cotter pins at each end of the rod.

2. After attaching the hopper side plates to the inside of the door angles, attach the hopper by running the hopper rod through both hopper side and plates & the hopper. Install cotter pins. If too large a gap exists between the side plates & the hopper, install flat washers between the side plates and the door angles.

3. Drill two 3/8" holes on the far right side of the gravity box using the transport bracket as a template. Mount bracket as low as possible. Slide the transport cradle onto the bracket; tighten it into position with the setscrew & lock collar.

4. Drill two 1/2" holes 30" apart, centered above the wagon door, as close to the top flange as the large washer permits. Fasten the eyebolts of the sliding cable assembly with the eyebolt support washer inside the wagon.

5. Using the flange clamp, attach the auger to the hopper. The clamp should be secure but allow the auger to swivel freely.

6. Attach the winch, approximately 36" from the motor, by prying open the winch bracket & sliding it over the auger, running the control rod thru the bracket. The pulley bracket & the control rod bracket attach in the same manner. The pulley bracket will be a protective band for the auger in transport position; locate it so the lock pin catches under the bottom edge of the transport cradle.

7. Attach the thimble end of the winch cable to the pulley on the sliding cable assembly, then run the other cable end through the pulley on the pulley bracket and attach it to the winch following the instruction page found with the winch parts.

8. Run the control rod through the winch bracket, under the bolt on the pulley bracket, and then through the stand-off bracket. Attach the control rod to the control valve by bolting the control rod plate onto the control valve arm.

9. Connect hydraulic power to the 3/8 Pipe Thread valve ports. Reverse connections if necessary for correct rotation of auger.

CAUTION: NEVER TRY TO UNPLUG THE AUGER WHEN UNDER POWER!