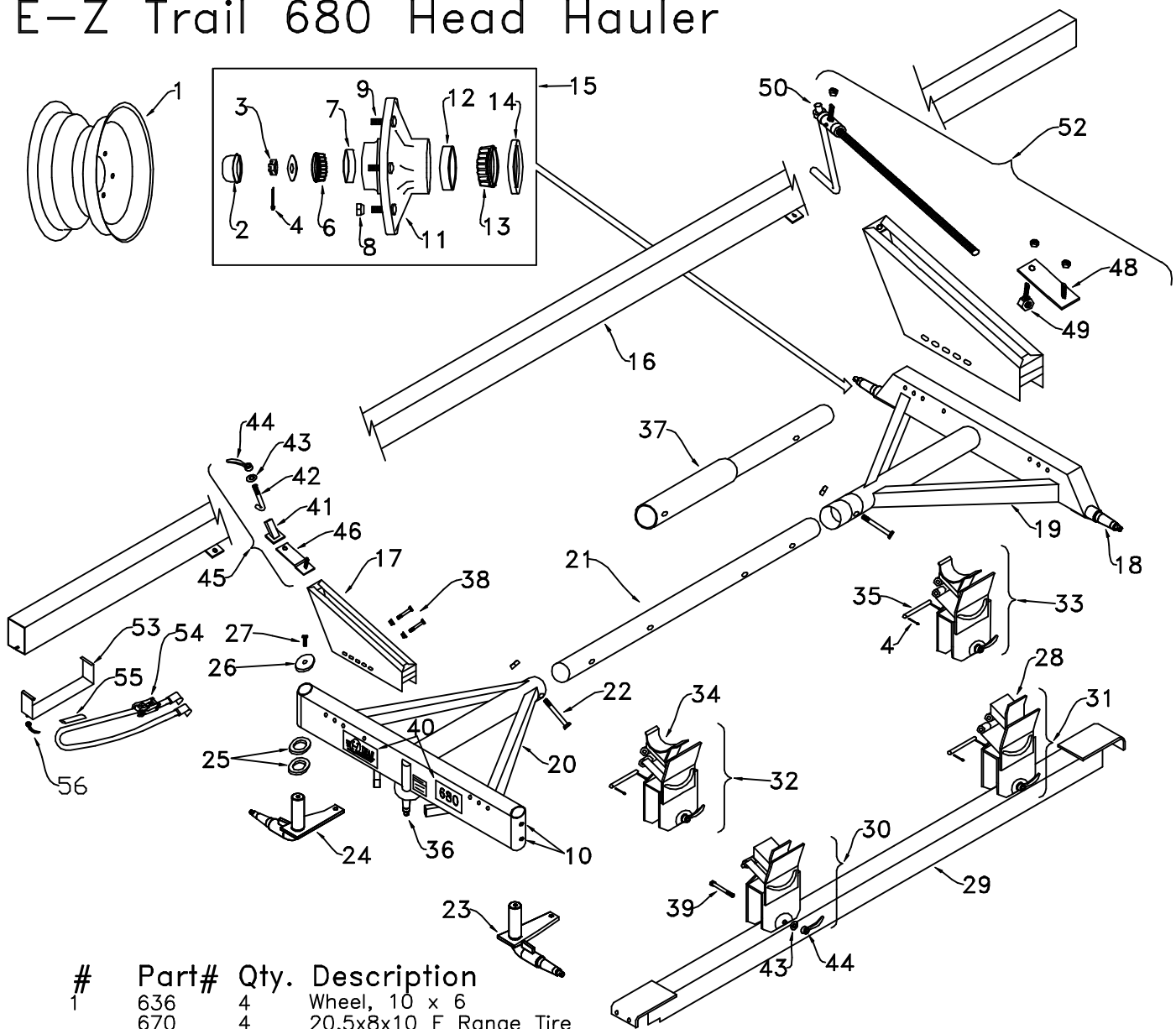


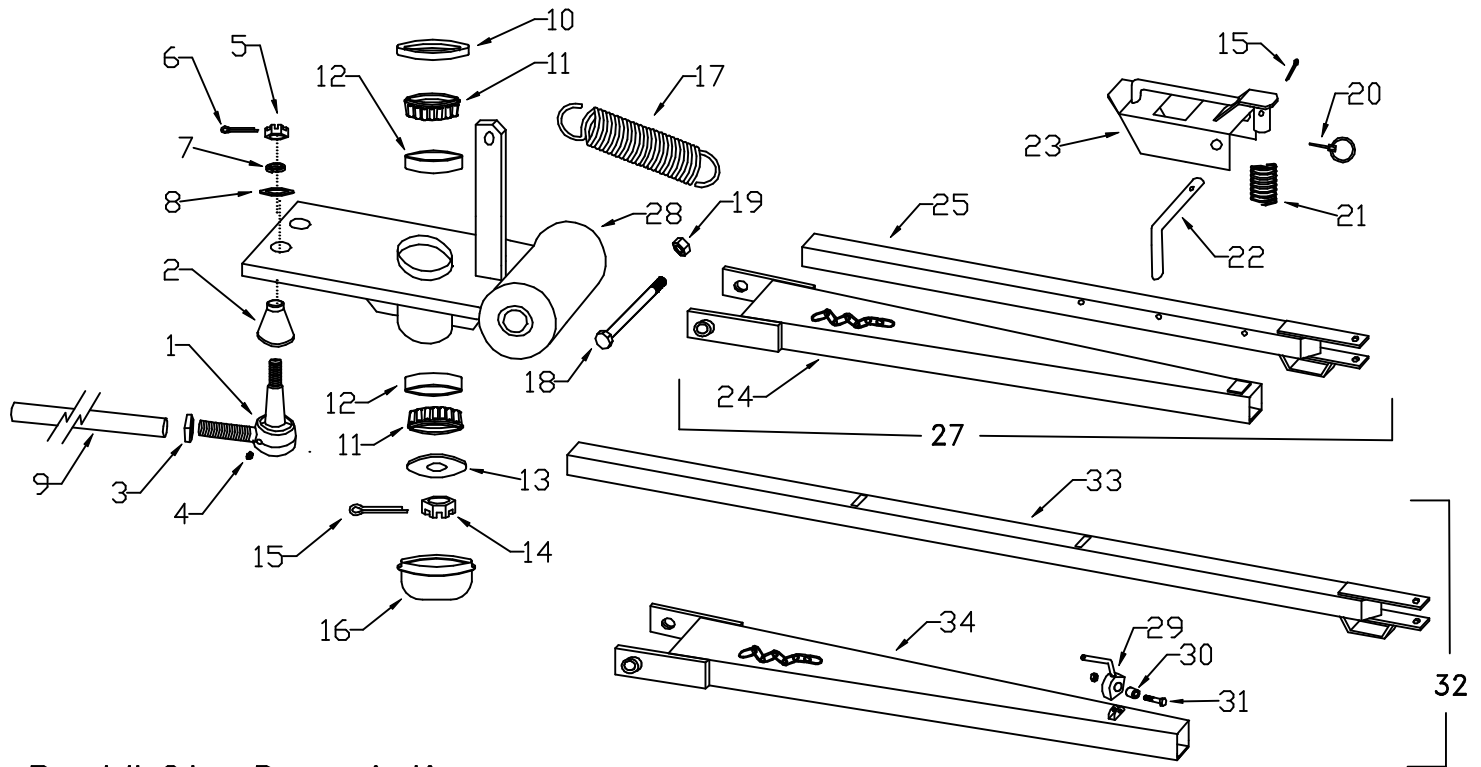
E-Z Trail 680 Head Hauler



#	Part#	Qty.	Description
1	636	4	Wheel, 10 x 6
	670	4	20.5x8x10 F Range Tire
	674	4	9.00-10 10 Ply Tire
2	642	4	Dust Cap
3	641	4	5/8-18 Slotted Nut
4	1045	4	Cotter Pin
5	640	4	5/8 Flat Washer
6	639	4	Outer Bearing
7	638	4	Outer Race
8	865	24	Wheel Nut
9	864	24	Wheel Stud
10	1093	12	Grease Zerk
11	635	4	Hub w/Races
12	1084	4	Inner Race
13	1085	4	Inner Bearing
14	632	4	Grease Seal
15	643	4	Hub Ass'y
16	688	1	21' Upper Rail
16	686	1	26' Upper Rail
16	687	1	31' Upper Rail
17	619	2	Incline Bracket
18	628	2	Rear Spindle
19	604	1	Rear Axle w/Spindles
20	603	1	Front Axle
21	696	1	Reach 87"
22	610	2	1/2x3.5 Bolt & Nut
23	621	1	Left Front Spindle
24	620	1	Right Front Spindle
25	622	4	Machinery Bushing
26	623	2	Bent Spindle Cap
27	1091	2	3/8-16 x 1 Bolt
28	655	2	Flat Top Saddle

#	Part#	Qty.	Description
29	617	1	12' Lower Rail for 21'
29	618	1	15'6" Lower Rail for 26' & 31'
30	656	1	Front Flat Flipper Bracket Ass'y
31	657	1	Rear Flat Flipper Bracket Ass'y
32	626	1	Front U Slider Bracket Ass'y
33	627	1	Rear U Slider Bracket Ass'y
34	631	2	U Saddle for Pipe Frame Heads
35	633	2	Hinge Pin
36	679	1	Steering Spindle Ass'y
37	634	1	3'6" Reach Extension, 26' & 31'
38	616	8	3/8 x 4 Bolt W/Flange Nut
39	658	2	5/8 x 5-1/2 Fine Thread Bolt
40	678	1	Decal Set for 680 Gear
41	663	2	Angle Tube
42	661	2	5/8 Hook Bolt
43	665	4	5/8 Flat Washer
44	660	4	5/8 Handle Nut
45	664	2	Incline Clamp Assembly
46	662	2	Offset Incline Clamp
48	644	2	Incline Clamp Plate
49	645	2	Nut Bolt
50	648	2	Adjustment Screw Ass'y
52	654	2	Crank Incline Bracket Ass'y, 31'
53	677	1	Tie Down Storage Tray
54	680	1	12' Ratchet Strap Assembly
55	683	1	Strap Protector
56	659	1	3/8 Handle Nut

Steering Assembly for 680 Head Hauler



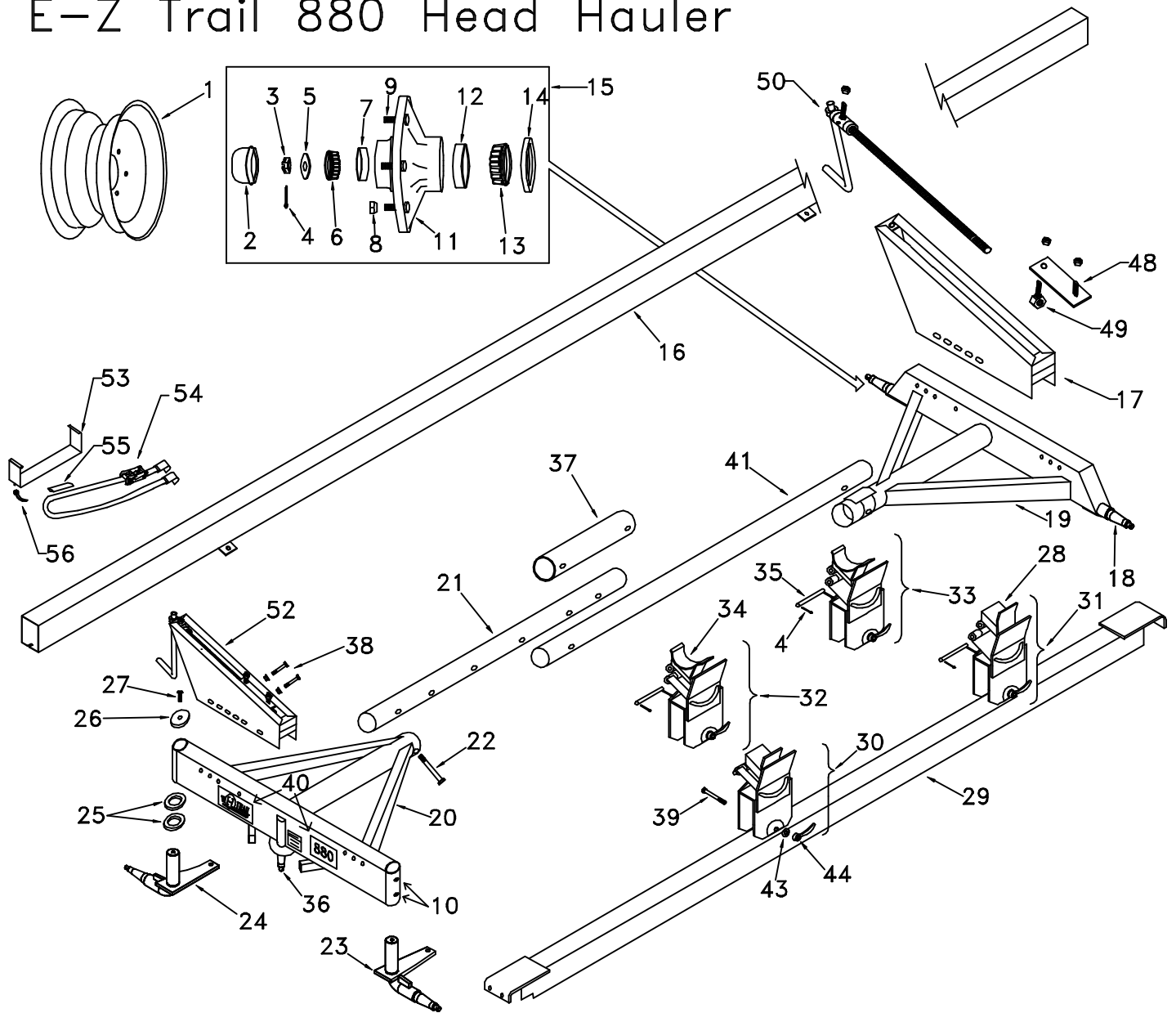
#	Part#	Qty.	Description
1	1092	4	Tie Rod End (Inc'd 2-6)
2	1043	4	Rubber Cover
3	1088	4	3/4-16 Jam Nut
4	1093	6	Grease Zerk
5	1042	4	9/16-18 Slotted Nut
6	1046	4	Cotter Pin
7	1048	4	5/8" Lock Washer
8	640	4	5/8" Flat Washer
9	828	2	Tie Rod
10	1081	1	Seal
11	1082	2	Steering Frame Bearing
12	1083	2	Steering Frame Race
13	1089	1	Washer
14	1087	1	3/4-16 Slotted Nut
15	1045	2	Cotter Pin
16	1098	1	Steering Frame Cap
17	1013	1	Spring
18	1014	1	Tongue Bolt
19	1020	1	7/8-9 Lock Nut
20	1017	1	Lock Pin
21	1010	1	Spring
22	1011	1	Latch Pin
23	1016	1	Latch
24	1061	1	Tongue Outer
25	1062	1	Tongue Inner
27	1063	1	E-Z Hitch Ass'y, 21'
28	1080	1	Steering Frame
29	609	1	Cam Latch
30	607	1	Cam Latch Bushing
31	606	1	7/16x2 Bolt & Locknut
32	612	1	Long Tongue, 26' & 31'
33	613	1	Long Tongue Inner *
34	611	1	Long Tongue Outer *

* Specify cam latch position:
 3" from front of tongue outer on '06 and older
 10" from front of tongue outer on '06 and newer

SET-UP & OPERATING INSTRUCTIONS

1. Bolt wheels in place & torque to approx. 100 ft. lbs.
2. Attach tongue with 7/8 x 9 1/2 bolt and lock nut. Raise end of tongue & hook lift assist spring to chain on tongue.
3. Remove bolts in the center reach pipe and slide axles out to 12'4" wheel base for the 21' model. The 26' and 31' models require a 3'6" extension for a 15'10" wheel base.
4. Remove the four white stakes and attach the lower rail to the left side using the 3/8 x 4 bolts removed from the stakes. Mount the slider brackets on the lower rail with 5/8 x 5 1/2 bolts and handle nuts.
5. Attach the incline brackets to the right side of the front and rear axles. It is difficult to say which set of holes will be best for your particular model of head. The outer hole of the axle and the second hole on the bracket will work well for most heads except Case IH. For most Case IH models these brackets will need to be bolted closer to the center of the axle. The rail spacing will determine the degree of slope for detaching the head. The degree of slope must be steep enough so the lower feeder house will break away without striking the lower rail.
6. Attach the long rail, short end forward, to the incline brackets, using the clamp assemblies. Tighten the 1/2" locknut only enough to bring the nut down against the rail plate, do not over-tighten. The patented clamp and slide feature permits E-Z relocation of the rail without wrenches by loosening only the handle nut on the top side of the rail. OR for crank adjust incline brackets: Simply bolt the top rail to the incline clamp with the 1/2" locknuts, leaving the nuts loose enough for the rail to slide.
7. Lubricate all grease points. Inflate tires to 60 PSI normal pressure; 12 row heads may require up to 70 PSI. Securely tie down the head being transported using chains or the optional tie-down strap kit. Always exercise safety first! Proper lighting is required when using on public highways.

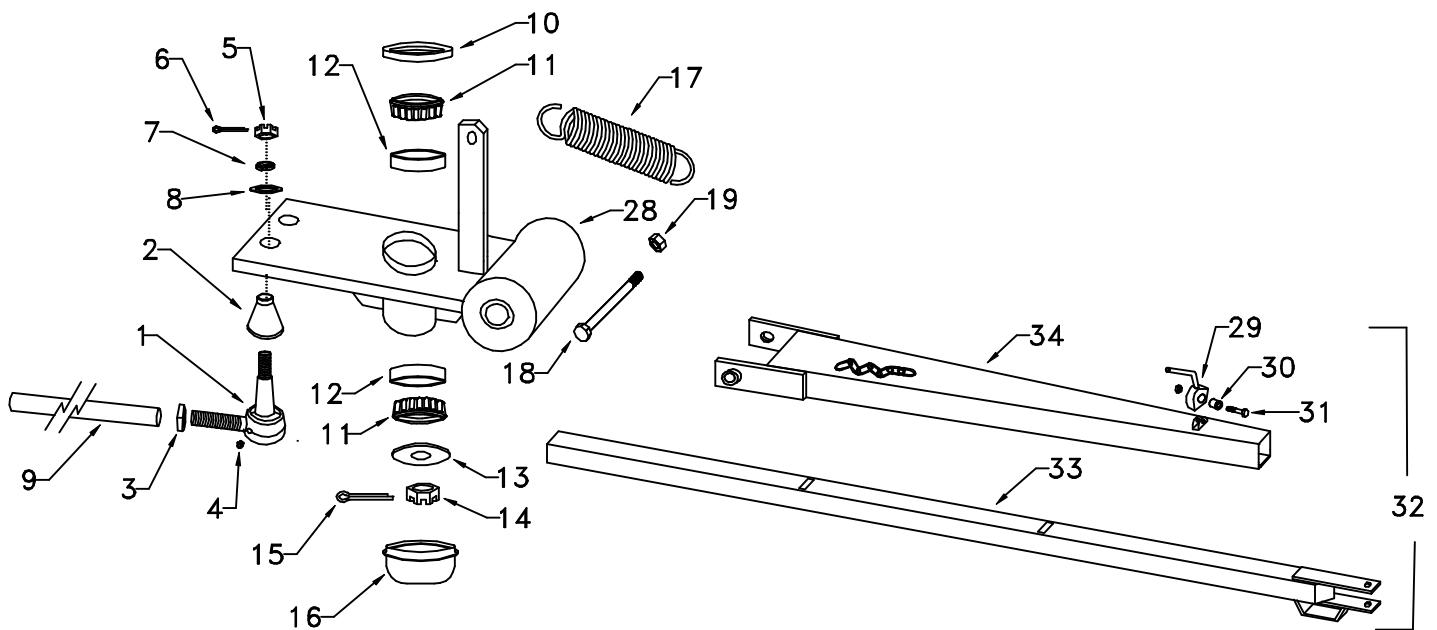
E-Z Trail 880 Head Hauler



#	Part#	Qty.	Description
1	636	4	Wheel, 10 x 6
1	8912	4	Opt: Wheel, 12 x 10.5
	674	4	9.00-10 Tire 10 Ply
	8926	4	Opt: 26 x 12 - 12 Tire
2	1044	4	Dust Cap
3	1087	4	3/4-16 Slotted Nut
4	1045	4	Cotter Pin
5	1086	4	Washer
6	1085	4	Outer Bearing
7	1084	4	Outer Race
8	865	24	Wheel Nut
9	864	24	Wheel Stud
10	1093	12	Grease Zerk
11	835	4	Hub w/Races
12	834	4	Inner Race
13	833	4	Inner Bearing
14	1081	4	Grease Seal
15	874	4	Hub Ass'y
16	689	1	36' Upper Rail
16	692	1	40' Upper Rail
	695	1	24'6" Draper Upper Rail
17	619	2	Incline Bracket
18	823	2	Rear Spindle
19	806	1	Rear Axle w/Spindles
20	805	1	Front Axle
21	696	1	Reach 87"
22	610	4	1/2 x 3.5 Bolt & Nut
23	811	1	Left Front Spindle
24	810	1	Right Front Spindle
25	815	4	Machinery Bushing
26	816	2	Bent Spindle Cap

#	Part#	Qty.	Description
27	1091	2	3/8-16 x 1 Bolt
28	655	2	Flat Top Saddle
29	690	1	22'6" Lower Rail
	893	1	26'8" Lower Drop Rail, O.S. Draper
	894	1	26'8" Lower Rail, N.S. Draper
	892	2	O.S. Draper Slider Brackets
	896	2	N.S. Draper Slider Brackets
	897	2	N.S. Draper Legs
	898	2	3/4 x 10 Pin
	899	2	Center Riser Brackets
30	656	1	Front Flat Flipper Bracket Ass'y
31	657	1	Rear Flat Flipper Bracket Ass'y
32	626	1	Front U Slider Bracket Ass'y
33	627	1	Rear U Slider Bracket Ass'y
34	631	2	U Saddle for Pipe Frame Heads
35	633	2	U Bracket Hinge Pin
36	679	1	Steering Spindle Ass'y
37	698	1	30" Reach Coupler
38	616	8	3/8 x 4 Bolt W/Flange Nut
39	658	2	5/8 x 5-1/2 Fine Thread Bolt
40	678	1	Decal Set
41	697	1	138" Long Reach
43	665	2	5/8 Flat Washer
44	660	2	5/8 Handle Nut
45	664	2	Incline Clamp Assembly
49	645	2	Nut Bolt
50	648	2	Adjustment Screw Ass'y
52	654	2	Crank Incline Bracket Ass'y
53	677	1	Tie Down Storage Tray
54	680	1	12' Ratchet Strap Assembly
55	683	1	Strap Protector
56	659	1	3/8 Handle Nut

Steering Assembly for 880 Head Hauler



#	Part#	Qty.	Description
1	1092	4	Tie Rod End (Inc'd 2-6)
2	1043	4	Rubber Cover
3	1088	4	3/4-16 Jam Nut
4	1093	6	Grease Zerk
5	1042	4	9/16-18 Slotted Nut
6	1046	4	Cotter Pin
7	1048	4	5/8" Lock Washer
8	640	4	5/8" Flat Washer
9	828	2	Tie Rod
10	1081	1	Seal
11	1082	2	Steering Frame Bearing
12	1083	2	Steering Frame Race
13	1089	1	Washer
14	1087	1	3/4-16 Slotted Nut
15	1045	2	Cotter Pin
16	1098	1	Steering Frame Cap
17	1013	1	Spring
18	1014	1	Tongue Bolt
19	1020	1	7/8-9 Lock Nut
28	1080	1	Steering Frame
29	609	1	Cam Latch
30	607	1	Cam Latch Bushing
31	606	1	7/16x2 Bolt & Locknut
32	612	1	12' Long Tongue Ass'y
33	613	1	Long Tongue Inner *
34	611	1	Long Tongue Outer *

* Specify cam latch position:
 3" from front of tongue outer on '06 and older
 10" from front of tongue outer on '06 and newer

SET-UP & OPERATING INSTRUCTIONS

1. Bolt wheels in place & torque to approx. 100 ft. lbs.
2. Attach tongue with 7/8 x 9 1/2 bolt and lock nut. Raise end of tongue & hook lift assist spring to chain on tongue.
3. Remove bolts in the center reach pipe and slide axles out to 12'4" wheel base for the 21' model. The 26' and 31' models require a 3'6" extension for a 15'10" wheel base.
4. Remove the four white stakes and attach the lower rail to the left side using the 3/8 x 4 bolts removed from the stakes. Mount the slider brackets on the lower rail with 5/8 x 5 1/2 bolts and handle nuts.
5. Attach the incline brackets to the right side of the front and rear axles. It is difficult to say which set of holes will be best for your particular model of head. The outer hole of the axle and the second hole on the bracket will work well for most heads except Case IH. For most Case IH models these brackets will need to be bolted closer to the center of the axle. The rail spacing will determine the degree of slope for detaching the head. The degree of slope must be steep enough so the lower feeder house will break away without striking the lower rail.
6. Attach the long rail, short end forward, to the incline brackets, using the clamp assemblies. Tighten the 1/2" locknut only enough to bring the nut down against the rail plate, do not over-tighten. The patented clamp and slide feature permits E-Z relocation of the rail without wrenches by loosening only the handle nut on the top side of the rail. OR for crank adjust incline brackets: Simply bolt the top rail to the incline clamp with the 1/2" locknuts, leaving the nuts loose enough for the rail to slide.
7. Lubricate all grease points. Inflate tires to 60 PSI normal pressure; 12 row heads may require up to 70 PSI. Securely tie down the head being transported using chains or the optional tie-down strap kit. Always exercise safety first! Proper lighting is required when using on public highways.