

OPERATORS MANUAL
&
PARTS BOOK
710 & 860
GRAIN CART



1050 E. COLUMBIA
P.O. BOX 168
ARTHUR, IL 61911

TOLL FREE: 800-677-2802
PHONE: 217-543-3471
WWW.E-ZTRAIL.COM

WARNING

Do not attempt to clean, adjust, lubricate, or enter the grain cart while any part is in operation.

Do not start the machine without all guards & shields in place & in good working condition.

Do not operate on public roads unless equipped with proper lighting or warning devices. It is the responsibility of the user & owner to install lighting or other equipment as required by state & federal laws.

Do not allow children to play on or around the grain cart.

OPERATION

The indicator flag on the front of the cart shows the position of the inner door.

When engaging the PTO, the door should be closed & and the tractor should be running at low RPM's to prolong the life of the driveline & gearbox.

With the auger running, open the door to begin unloading grain. Do not exceed 750 PTO RPM for maximum efficiency & auger life.

When the cart is nearly empty, the door can be partially closed to provide better clean out.

Over tightening of the shear bolt on the front PTO yoke creates excessive friction, which drastically increases shear torque and can damage or result in premature failure of the gearbox. Always use a locknut on the shearbolt and leave the nut loose enough that you can turn the bolt with your fingers.

The top auger must remain locked in the unloading position while the PTO is engaged. Folding the top auger while the auger is turning can cause damage to the augers.

The top auger is equipped with an over-center lock to hold the auger in unloading position. If the auger will not fold down, the lock may be going too far over center. To correct this, a shim can be placed between the square bar & the stop pin on the linkage bars.

MAINTENANCE

Grease regularly:

- PTO Shaft
- U-joint at Gearbox
- Bearing at Top of Lower Auger
- Bearing at Top of Top Auger
- Auger Hinge
- Auger Over-Center Lock
- Swivel Hitch

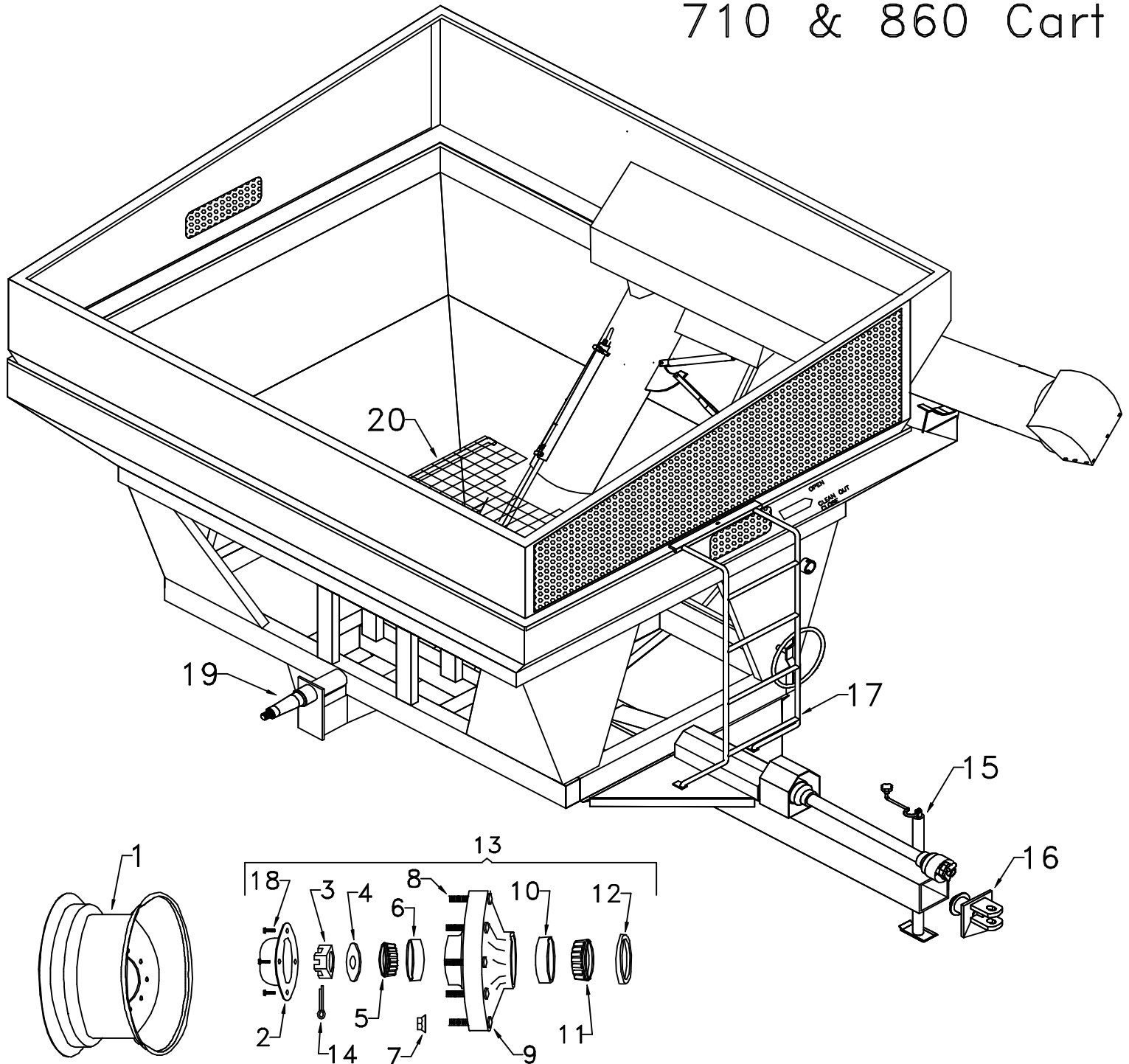
Approximate Tire Inflations:

- 18.4 x 26 ... 35 PSI
- 23.1 x 26 ... 33 PSI
- 24.5 x 32 ... 30 PSI
- 30.5 x 32 ... 30 PSI.

Before first use, then annually:

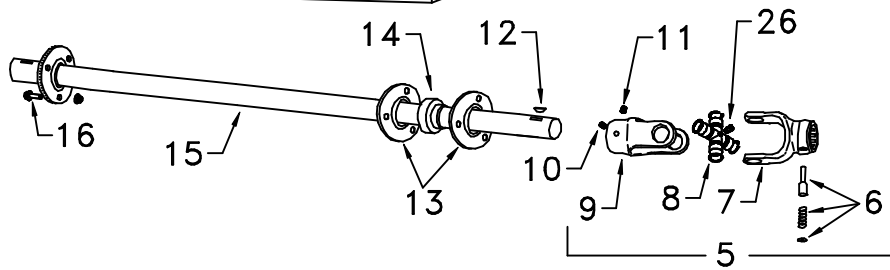
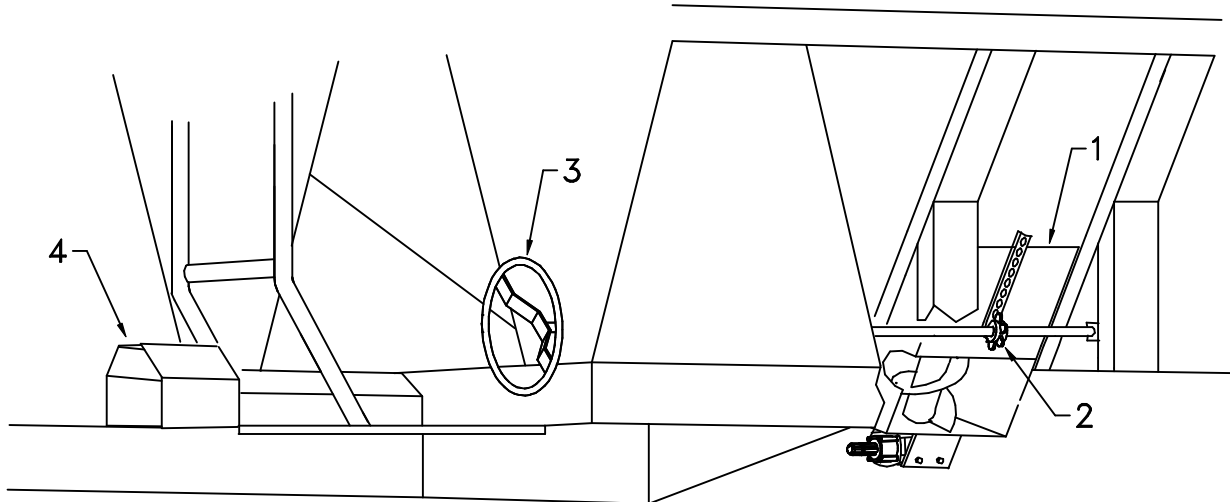
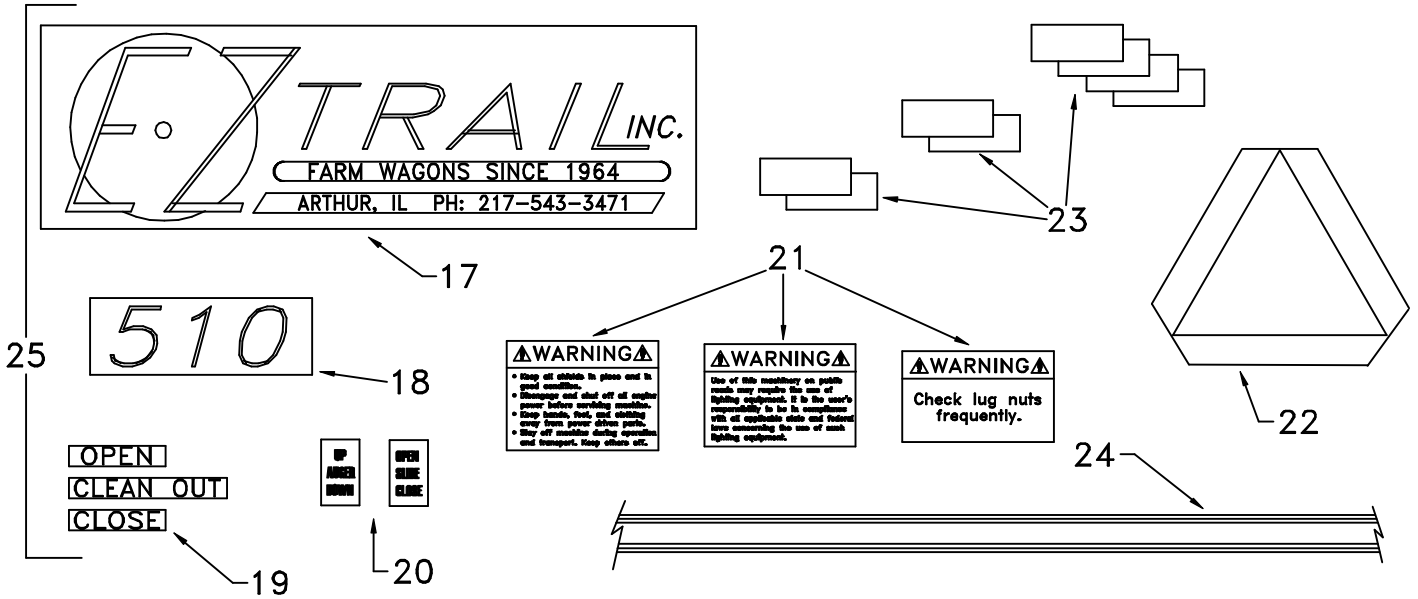
- Check gearbox oil level, use 90W oil.
- Check wheel bearings for sufficient grease & proper adjustment.

710 & 860 Cart



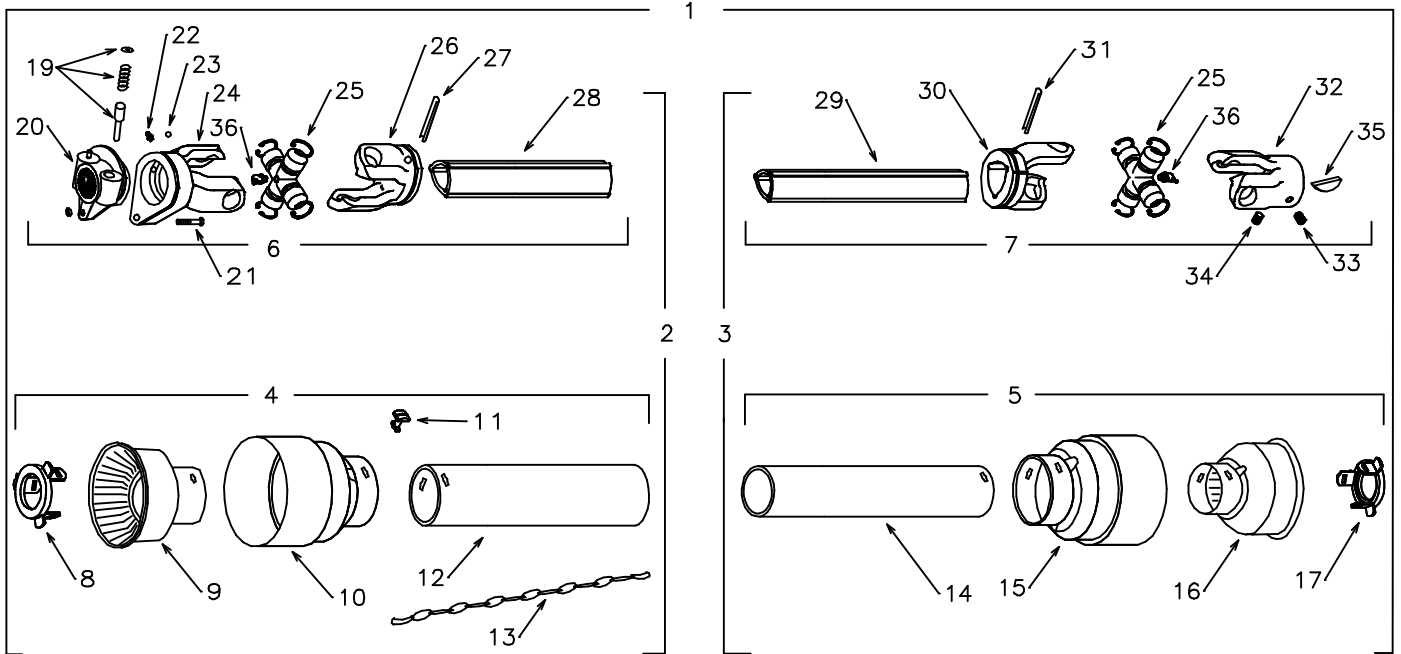
#	Part#	Qty.	Description
1	50621	2	Wheel 32x21-24.5
1	50627	2	Wheel 32x27-30.5
2	50653	2	Hub Cap
3	50652	2	Slotted Nut
4	50651	2	Washer
5	50659	2	Outer Bearing
6	50611	2	Outer Race
7	50655	20	Wheel Nut
8	50542	20	Wheel Stud
9	50649	2	Hub
10	50610	2	Inner Race
11	50648	2	Inner Bearing
12	50671	2	Grease Seal
13	50658	2	Hub Assembly
14	50656	2	Cotter Pin
15	50576	1	Jack Assembly
16	50609	1	Swivel Hitch Assembly
17	50638	1	Ladder 710
17	50138	1	Ladder 860
18	50459	8	5/16 x 1/2 Bolt
19	50650	2	Spindle
20	50178	1	Safety Grate Assembly

Decals – All Carts



#	Part#	Qty.	Description	#	Part#	Qty.	Description
1	50140	1	Outer Door	14	50477	2	1-1/4 Bearing W/Collar
2	4241	1	6 Tooth Pinion Gear	15	50686	1	86" Drive Shaft
3	50147	1	Handwheel & Shaft 510	16		6	3/8 x 3/4 Bolt W/Nut
3	50148	1	Handwheel & Shaft 710,860	17	50246	2	E-Z Trail Decal
4	50243	1	"Doghouse" PTO Guard	18	50247	2	Model # Decal (Specify)
5	50622	1	U-Joint Assy.	19	50250	1	Indicator Decal Set
6	50278	1	Push Pin Set	20	50251	1	Hose Decal Set
7	50298	1	Gearbox Yoke W/Pin	21	50252	1	Warning Decal Set
8	50284	1	Cross Kit	22	50253	1	SMV Decal
9	50291	1	Machine Yoke	23	50154	1	Reflector Set
10	50292	1	Set Screw 3/8 x 3/8	24	50255	1	47 Ft. Stripe
11	50293	1	Set Screw 3/8 x 1/2	25	50256	1	Grain Cart Decal Set
12	50294	1	Half Moon Key 5/16 x 1.25	26	50295	1	Grease Zerk
13	50476	4	3 Hole Flange				

PTO Parts for all Grain Carts



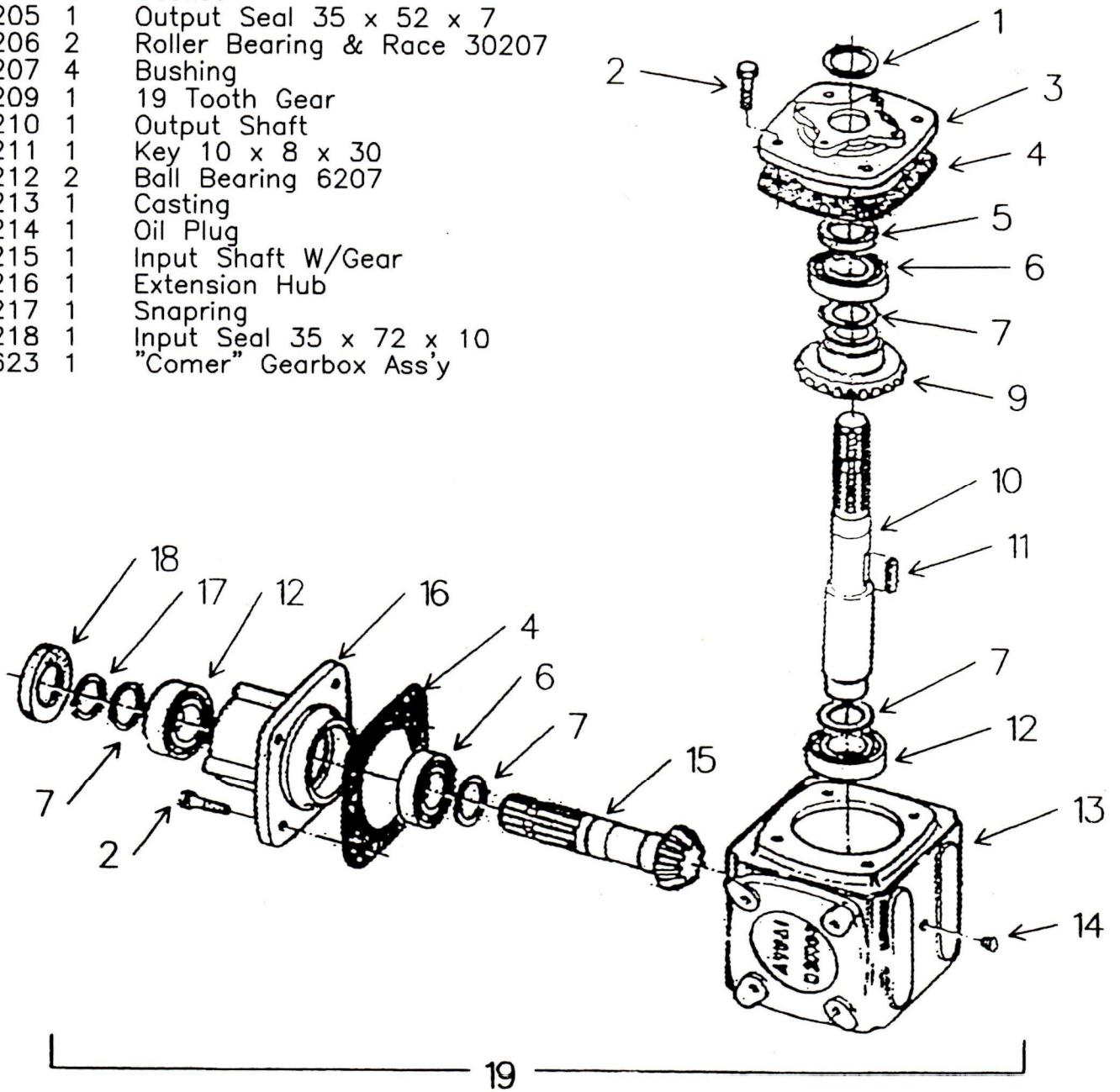
#	Part#	Qty.	Description	#	Part#	Qty.	Description
1	50615	1	1000 RPM, 1-3/8 PTO Assy.	19	50278	2	Push Pin Set
2	50616	1	Front 1/2 PTO	20	50279	1	Front Spline, W/Pins
3	50617	1	Rear 1/2 PTO	21	50280	1	Shear Bolt w/locknut
4	50618	1	Front Shield Assy.	22	50281	1	Grease Zerk
5	50619	1	Rear Shield Assy.	23	50282	1	Set of Balls (24)
6	50265	1	Front Shaft Assy.	24	50283	1	Tractor Yoke
7	50266	1	Rear Shaft Assy.	25	50284	2	Cross Kit
8	50267	1	Front Shield Retaining Collar	26	50285	1	Front Yoke
9	50268	1	Front Shield Inner Bell	27	50286	1	Roll Pin
10	50269	1	Front Shield Outer Bell	28	50287	1	Front Shaft
11	50270	6	Shield Retaining Clips	29	50288	1	Rear Shaft
12	50271	1	Front Shield Tube	30	50289	1	Rear Yoke
13	50272	2	Safety Chains	31	50290	1	Roll Pin
14	50273	1	Rear Shield Tube	32	50291	1	Machine Yoke
15	50274	1	Rear Shield Outer Bell	33	50292	1	Set Screw 3/8 x 3/8
16	50275	1	Rear Shield Inner Bell	34	50293	1	Set Screw 3/8 x 1/2
17	50276	1	Rear Shield Retaining Collar	35	50294	1	Half Moon Key 5/16x1-1/4
				36	50295	2	Grease Zerk, 45°, 8mm

Optional 1000 RPM, 1-3/4 PTO:

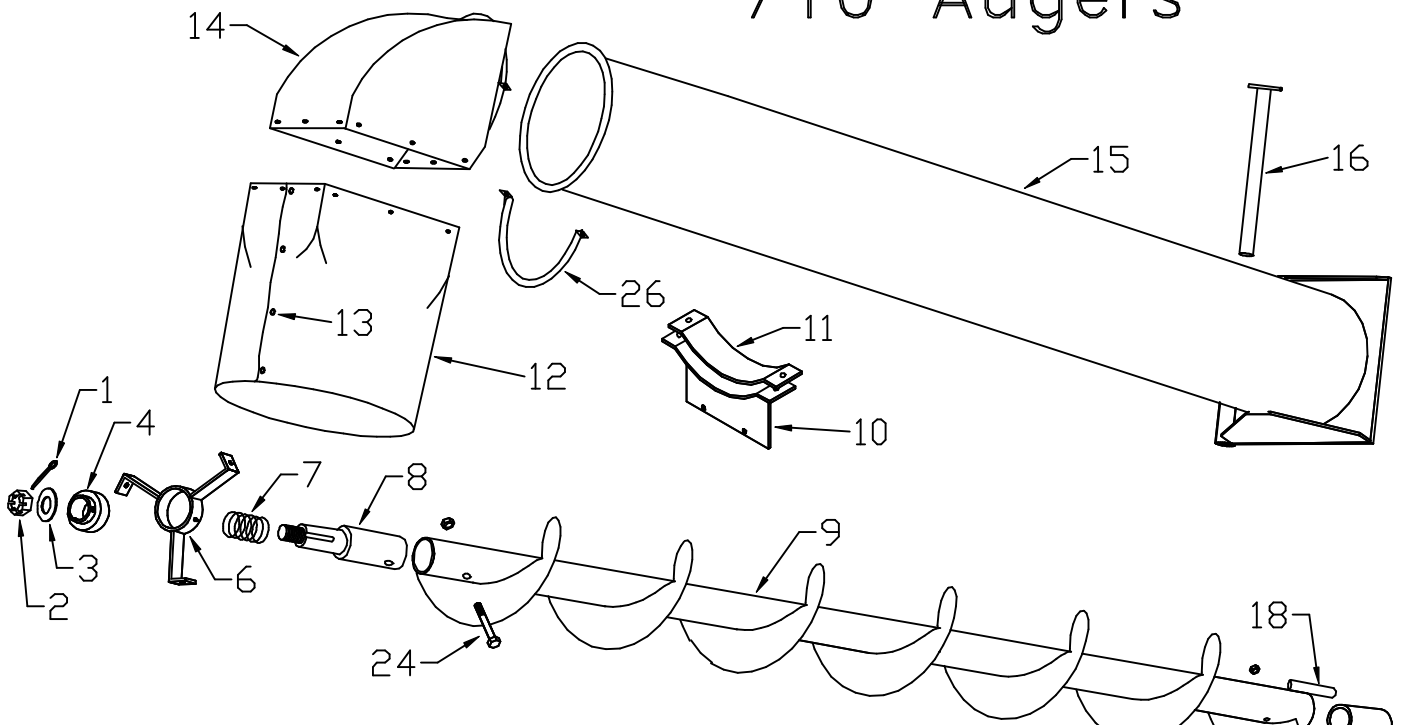
1	50315	1	1000 RPM, 1-3/8 PTO Assy.
2	50316	1	Front 1/2 PTO
3	50317	1	Rear 1/2 PTO
4	50318	1	Front Shield Assy.
5	50319	1	Rear Shield Assy.
6	50365	1	Front Shaft Assy.
7	50366	1	Rear Shaft Assy.
25	50384	2	Cross Kit

Comer Gearbox

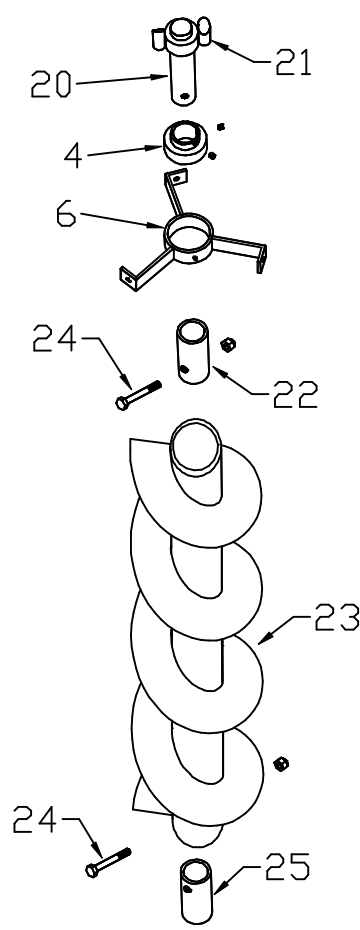
#	Part#	Qty.	Description
1	50201	1	External Seal
2	50202	8	Cap Screw M 12 x 25
3	50203	1	Cover
4	50204	2	Gasket
5	50205	1	Output Seal 35 x 52 x 7
6	50206	2	Roller Bearing & Race 30207
7	50207	4	Bushing
9	50209	1	19 Tooth Gear
10	50210	1	Output Shaft
11	50211	1	Key 10 x 8 x 30
12	50212	2	Ball Bearing 6207
13	50213	1	Casting
14	50214	1	Oil Plug
15	50215	1	Input Shaft W/Gear
16	50216	1	Extension Hub
17	50217	1	Snapping
18	50218	1	Input Seal 35 x 72 x 10
19	50623	1	"Comer" Gearbox Ass'y



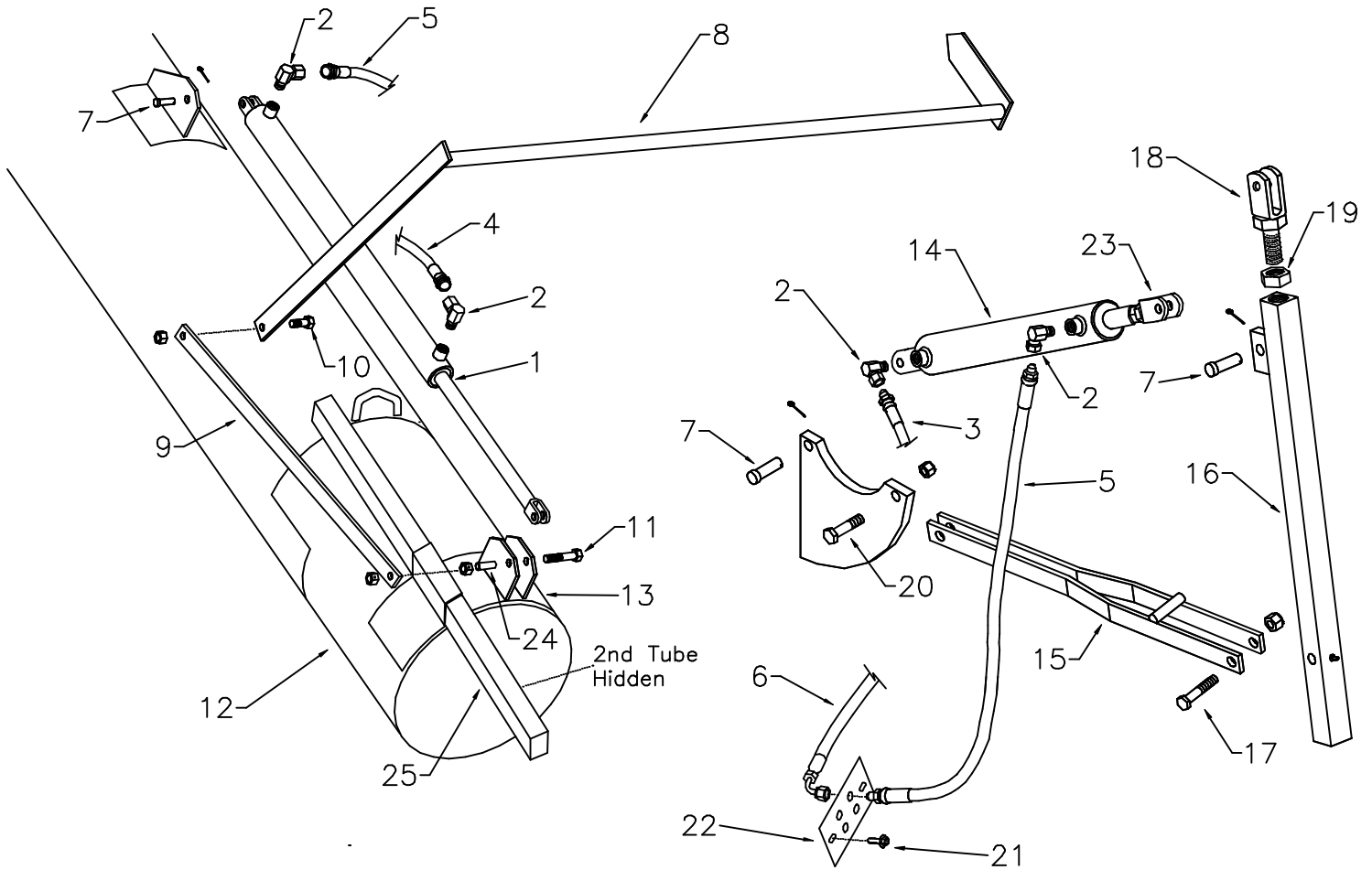
710 Augers



#	Part#	Qty.	Description
1	50458	1	Cotter Pin
2	50452	1	Slotted Nut
3	50451	1	Washer
4	50629	2	2" Bearing
6	50128	2	3-Way Hanger
7	50135	1	Spring
8	50141	1	Top Stub Shaft
9	50192	1	92" Top Auger w/Drive Dog
10	50464	1	Auger Support Bracket
11	50463	1	Rubber Rest Pad
12	50646	1	Rubber Spout
13	50389	16	1/4 x 1-1/4 Step Bolt w/flange nut
14	50179	1	Discharge Head
15	50161	1	Top Auger Tube
16	50462	1	Hinge Pin
17	50466	1	Sleeve
18	50465	1	Top Drive Dog
19		1	3/8 x 3-1/4 Bolt w/locknut
20	50630	1	Pointed Male Shaft w/Drive Dogs
21	50467	2	Bottom Drive Dog
22	50469	1	Sleeve
23	50196	1	96" Lower Auger w/Hard Surface Flighting
24		3	5/8 x 3-1/2 Bolt w/locknut
25	50624	1	Splined Sleeve
26	50180	1	Flange Clamp

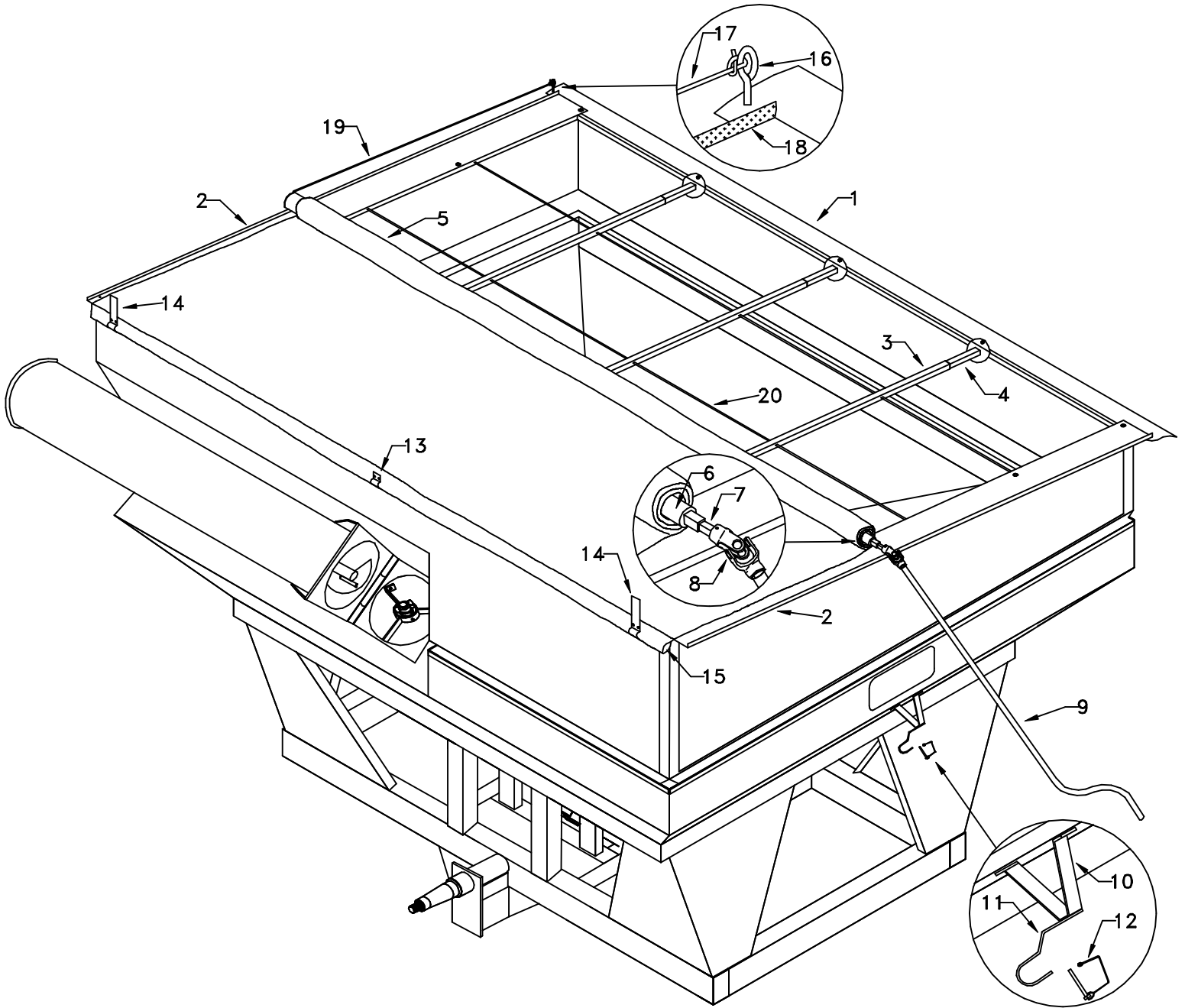


710/860 Cylinders & Hoses



#	Part#	Qty.	Description
1	50127	1	2-1/2" x 27" Cylinder
	50113	1	2-1/2" Cylinder Seal Kit
2	50410	4	90 Deg. Fitting
3	50103	1	20" Hydraulic Line
4	50102	1	60" Hydraulic Line
5	50401	2	32" Hydraulic Line
6	50603	4	112" Hydraulic Line, 90 Deg. Ends
	50604	4	112" Hydraulic Line to Tractor
7	50412	4	Clevis Pin W/Cotter Pin
8	50132	1	Indicator Assembly
9	50134	1	Indicator Linkage Arm
10		1	1/2 x 1 Bolt W/Lock Nut
11		1	1/2 x 4-1/2 Bolt w/Lock Nut
12	50112	1	Sliding Tube Door
13	50115	1	Cylinder Anchor Bracket Asembly
14	50612	1	2" x 12" Cylinder (Includes #23)
	50613	1	2" Cylinder Seal Kit
15	50606	1	Auger Lock Linkage Bars
16	50608	1	Auger Lock Square Bar
17		1	1/2 x 3 Bolt w/Lock Nut
18	50607	1	7/8" Clevis Bolt
19	50601	1	7/8" Jam Nut
20		1	1/2 x 2-1/4 Bolt w/Lock Nut
21		4	3/8 x 3/4 Flange Bolt
22	50411	2	Hose Plate
23	50673	1	5/8" Clevis Bolt
24	50116	1	Spacer
25	50130	1	Slide Rail Set

710/860 ROLL TARP



#	Part#	Qty.	Description
1	4815	1	Latch Plate
2	50867	1	Shelf Plate
3	50854	3	Long Cross Tube
4	50855	3	Short Cross Tube
5	50846	1	Tarp
6	4835	1	Roll Tube
7	4839	1	Square Drive Tube
8	4840	1	U-Joint
9	50837	1	Crank, 710
9	50838	1	Crank, 860
10	50848	1	Crank Retaining Bracket
11	50849	1	Crank Retainer
12	50851	1	Crank Retaining Pin
13	4851	1	Tarp Clamp
14	50850	2	Straight Tarp Stop
15	4865	1	Fastening Pipe
16	4868	1	Eyebolt
17	4859	1	Bungee Cord
18	4860	1	Edge Trim
19	4858	1	Roll Plug
20	50883	3	Center Rod